

TBL1XR1 Antibody (N-term)
Affinity Purified Rabbit Polyclonal Antibody (Pab)
Catalog # AP16411A

Specification

TBL1XR1 Antibody (N-term) - Product Information

Application	WB,E
Primary Accession	Q9BZK7
Other Accession	Q8BHJ5 , Q7SZM9 , NP_078941.2
Reactivity	Human
Predicted	Xenopus, Mouse
Host	Rabbit
Clonality	Polyclonal
Isotype	Rabbit IgG
Calculated MW	55595
Antigen Region	109-137

TBL1XR1 Antibody (N-term) - Additional Information

Gene ID 79718

Other Names

F-box-like/WD repeat-containing protein TBL1XR1, Nuclear receptor corepressor/HDAC3 complex subunit TBLR1, TBL1-related protein 1, Transducin beta-like 1X-related protein 1, TBL1XR1, IRA1, TBLR1

Target/Specificity

This TBL1XR1 antibody is generated from rabbits immunized with a KLH conjugated synthetic peptide between 109-137 amino acids from the N-terminal region of human TBL1XR1.

Dilution

WB~~1:1000

Format

Purified polyclonal antibody supplied in PBS with 0.09% (W/V) sodium azide. This antibody is purified through a protein A column, followed by peptide affinity purification.

Storage

Maintain refrigerated at 2-8°C for up to 2 weeks. For long term storage store at -20°C in small aliquots to prevent freeze-thaw cycles.

Precautions

TBL1XR1 Antibody (N-term) is for research use only and not for use in diagnostic or therapeutic procedures.

TBL1XR1 Antibody (N-term) - Protein Information

Name TBL1XR1

Synonyms IRA1, TBLR1

Function F-box-like protein involved in the recruitment of the ubiquitin/19S proteasome complex to nuclear receptor-regulated transcription units. Plays an essential role in transcription activation mediated by nuclear receptors. Probably acts as integral component of the N-Cor corepressor complex that mediates the recruitment of the 19S proteasome complex, leading to the subsequent proteasomal degradation of N-Cor complex, thereby allowing cofactor exchange, and transcription activation.

Cellular Location

Nucleus.

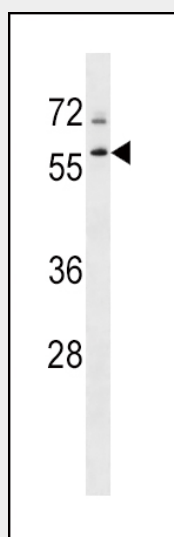
Tissue Location

Widely expressed including the pituitary, hypothalamus, white and brown adipose tissue, muscle and liver

TBL1XR1 Antibody (N-term) - Protocols

Provided below are standard protocols that you may find useful for product applications.

- [Western Blot](#)
- [Blocking Peptides](#)
- [Dot Blot](#)
- [Immunohistochemistry](#)
- [Immunofluorescence](#)
- [Immunoprecipitation](#)
- [Flow Cytometry](#)
- [Cell Culture](#)

TBL1XR1 Antibody (N-term) - Images

TBL1XR1 Antibody (N-term) (Cat. #AP16411a) western blot analysis in K562 cell line lysates (35ug/lane). This demonstrates the TBL1XR1 antibody detected the TBL1XR1 protein (arrow).

TBL1XR1 Antibody (N-term) - Background

TBL1XR1 has sequence similarity

with members of the WD40 repeat-containing protein family. The WD40 group is a large family of proteins, which appear to have a regulatory function. It is believed that the WD40 repeats mediate protein-protein interactions and members of the family are involved in signal transduction, RNA processing, gene regulation, vesicular trafficking, cytoskeletal assembly and may play a role in the control of cytotypic differentiation.

TBL1XR1 Antibody (N-term) - References

Rose, J.E., et al. Mol. Med. 16 (7-8), 247-253 (2010) :
Rothenberg, M.E., et al. Nat. Genet. 42(4):289-291(2010)
Parker, H., et al. Genes Chromosomes Cancer 47(12):1118-1125(2008)
Ishii, S., et al. Proc. Natl. Acad. Sci. U.S.A. 105(11):4179-4184(2008)
Li, J., et al. Nat. Cell Biol. 10(2):160-169(2008)