

**CEP72 Antibody (Center)**  
**Affinity Purified Rabbit Polyclonal Antibody (Pab)**  
**Catalog # AP16441c****Specification**

---

**CEP72 Antibody (Center) - Product Information**

Application	WB,E
Primary Accession	<a href="#">O9P209</a>
Other Accession	<a href="#">NP_060610.2</a>
Reactivity	Human
Host	Rabbit
Clonality	Polyclonal
Isotype	Rabbit IgG
Calculated MW	71718
Antigen Region	231-259

**CEP72 Antibody (Center) - Additional Information****Gene ID** 55722**Other Names**

Centrosomal protein of 72 kDa, Cep72, CEP72, KIAA1519

**Target/Specificity**

This CEP72 antibody is generated from rabbits immunized with a KLH conjugated synthetic peptide between 231-259 amino acids from the Central region of human CEP72.

**Dilution**

WB~~1:1000

**Format**

Purified polyclonal antibody supplied in PBS with 0.09% (W/V) sodium azide. This antibody is purified through a protein A column, followed by peptide affinity purification.

**Storage**

Maintain refrigerated at 2-8°C for up to 2 weeks. For long term storage store at -20°C in small aliquots to prevent freeze-thaw cycles.

**Precautions**

CEP72 Antibody (Center) is for research use only and not for use in diagnostic or therapeutic procedures.

**CEP72 Antibody (Center) - Protein Information****Name** CEP72**Synonyms** KIAA1519

**Function** Involved in the recruitment of key centrosomal proteins to the centrosome. Provides centrosomal microtubule-nucleation activity on the gamma-tubulin ring complexes (gamma-TuRCs) and has critical roles in forming a focused bipolar spindle, which is needed for proper tension generation between sister chromatids. Required for localization of KIZ, AKAP9 and gamma-tubulin ring complexes (gamma-TuRCs) (PubMed:[19536135](#)). Involved in centriole duplication. Required for CDK5RAP22, CEP152, WDR62 and CEP63 centrosomal localization and promotes the centrosomal localization of CDK2 (PubMed:[26297806](#)).

#### **Cellular Location**

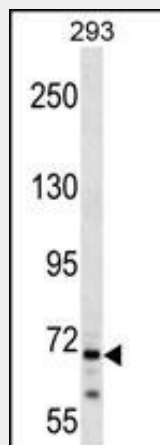
Cytoplasm, cytoskeleton, microtubule organizing center, centrosome. Cytoplasm, cytoskeleton, microtubule organizing center, centrosome, centriolar satellite. Note=Localizes to the centrosome and centrosome-surrounding particles throughout the cell cycle. These particles disappear after microtubules are depolymerized using nocodazole, suggesting that CEP72-associating particles localize in a microtubule- dependent manner

### **CEP72 Antibody (Center) - Protocols**

Provided below are standard protocols that you may find useful for product applications.

- [Western Blot](#)
- [Blocking Peptides](#)
- [Dot Blot](#)
- [Immunohistochemistry](#)
- [Immunofluorescence](#)
- [Immunoprecipitation](#)
- [Flow Cytometry](#)
- [Cell Culture](#)

### **CEP72 Antibody (Center) - Images**



CEP72 Antibody (Center) (Cat. #AP16441c) western blot analysis in 293 cell line lysates (35ug/lane). This demonstrates the CEP72 antibody detected the CEP72 protein (arrow).

### **CEP72 Antibody (Center) - Background**

CEP72 is a member of the leucine-rich-repeat (LRR) superfamily of proteins. The protein is localized to the centrosome, a non-membraneous organelle that functions as the major microtubule-organizing center in animal cells.

## **CEP72 Antibody (Center) - References**

McGovern, D.P., et al. Nat. Genet. 42(4):332-337(2010)  
Briggs, F.B., et al. Genes Immun. 11(3):199-208(2010)  
Oshimori, N., et al. EMBO J. 28(14):2066-2076(2009)  
Xin, X., et al. Genome Res. 19(7):1262-1269(2009)  
Olsen, J.V., et al. Cell 127(3):635-648(2006)