

**Mouse Mesp1 Antibody (Center)**  
**Affinity Purified Rabbit Polyclonal Antibody (Pab)**  
**Catalog # AP16455c**

**Specification**

---

**Mouse Mesp1 Antibody (Center) - Product Information**

Application	WB,E
Primary Accession	<a href="#">P97309</a>
Other Accession	<a href="#">O08574</a> , <a href="#">Q0VG99</a> , <a href="#">Q9BRJ9</a> , <a href="#">NP_032614.2</a>
Reactivity	Mouse
Predicted	Human
Host	Rabbit
Clonality	Polyclonal
Isotype	Rabbit IgG
Antigen Region	62-91

**Mouse Mesp1 Antibody (Center) - Additional Information**

**Gene ID** 17292

**Other Names**

Mesoderm posterior protein 1, Mesp1

**Target/Specificity**

This Mouse Mesp1 antibody is generated from rabbits immunized with a KLH conjugated synthetic peptide between 62-91 amino acids from the Central region of mouse Mesp1.

**Dilution**

WB~~1:500-1:2000

**Format**

Purified polyclonal antibody supplied in PBS with 0.09% (W/V) sodium azide. This antibody is purified through a protein A column, followed by peptide affinity purification.

**Storage**

Maintain refrigerated at 2-8°C for up to 2 weeks. For long term storage store at -20°C in small aliquots to prevent freeze-thaw cycles.

**Precautions**

Mouse Mesp1 Antibody (Center) is for research use only and not for use in diagnostic or therapeutic procedures.

**Mouse Mesp1 Antibody (Center) - Protein Information**

**Name** Mesp1

**Function** Transcription factor. Plays a role in the epithelialization of somitic mesoderm and in the development of cardiac mesoderm. Defines the rostrocaudal patterning of the somites by

participating in distinct Notch pathways.

#### Cellular Location

Nucleus.

#### Tissue Location

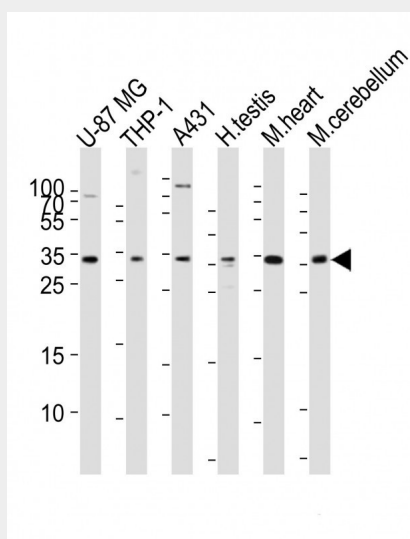
No expression was detected in adult tissues except the testis. Expression in the testis was regulated developmentally; expressed 2 weeks after birth, and increases, reaching the full expression level in mature testes.

### Mouse Mesp1 Antibody (Center) - Protocols

Provided below are standard protocols that you may find useful for product applications.

- [Western Blot](#)
- [Blocking Peptides](#)
- [Dot Blot](#)
- [Immunohistochemistry](#)
- [Immunofluorescence](#)
- [Immunoprecipitation](#)
- [Flow Cytometry](#)
- [Cell Culture](#)

### Mouse Mesp1 Antibody (Center) - Images



Western blot analysis of lysates from U-87 MG, THP-1, A431 cell line, human testis, mouse heart, mouse cerebellum tissue lysate (from left to right), using MESP1 Antibody (Mouse) (Cat. #AP16455c). A goat anti-rabbit IgG H&L (HRP) at 1:10000 dilution was used as the secondary antibody. Lysates at 20ug per lane.

### Mouse Mesp1 Antibody (Center) - Background

Mesp1 is a transcription factor. Plays a role in the epithelialization of somitic mesoderm and in the development of cardiac mesoderm. Defines the rostrocaudal patterning of the somites by participating in distinct Notch pathways.

### Mouse Mesp1 Antibody (Center) - References

Yu, S., et al. Dev. Biol. 347(1):92-108(2010)  
Li, P., et al. Dev. Cell 18(3):480-485(2010)  
Powers, S.E., et al. Development 137(2):249-259(2010)  
Randall, V., et al. J. Clin. Invest. 119(11):3301-3310(2009)  
Dominguez-Frutos, E., et al. Mech. Dev. 126(10):873-881(2009)