

**GNL2 Antibody (N-term)**  
**Affinity Purified Rabbit Polyclonal Antibody (Pab)**  
**Catalog # AP16458a**

**Specification**

---

**GNL2 Antibody (N-term) - Product Information**

Application	WB,E
Primary Accession	<a href="#">Q13823</a>
Other Accession	<a href="#">NP_037417.1</a>
Reactivity	Human
Host	Rabbit
Clonality	Polyclonal
Isotype	Rabbit IgG
Calculated MW	83655
Antigen Region	18-45

**GNL2 Antibody (N-term) - Additional Information**

**Gene ID** 29889

**Other Names**

Nucleolar GTP-binding protein 2, Autoantigen NGP-1, GNL2, NGP1

**Target/Specificity**

This GNL2 antibody is generated from rabbits immunized with a KLH conjugated synthetic peptide between 18-45 amino acids from the N-terminal region of human GNL2.

**Dilution**

WB~~1:1000

**Format**

Purified polyclonal antibody supplied in PBS with 0.09% (W/V) sodium azide. This antibody is purified through a protein A column, followed by peptide affinity purification.

**Storage**

Maintain refrigerated at 2-8°C for up to 2 weeks. For long term storage store at -20°C in small aliquots to prevent freeze-thaw cycles.

**Precautions**

GNL2 Antibody (N-term) is for research use only and not for use in diagnostic or therapeutic procedures.

**GNL2 Antibody (N-term) - Protein Information**

**Name** GNL2

**Synonyms** NGP1

**Function** GTPase that associates with pre-60S ribosomal subunits in the nucleolus and is required for their nuclear export and maturation (PubMed:[32669547](#)). May promote cell proliferation possibly by increasing p53/TP53 protein levels, and consequently those of its downstream product CDKN1A/p21, and decreasing RPL23A protein levels (PubMed:[26203195](#)).

**Cellular Location**

Nucleus, nucleolus

**Tissue Location**

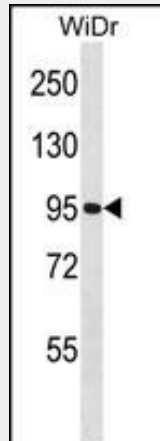
Widely expressed, with the highest expression level in testis.

**GNL2 Antibody (N-term) - Protocols**

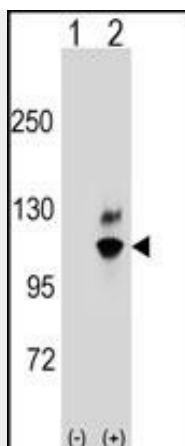
Provided below are standard protocols that you may find useful for product applications.

- [Western Blot](#)
- [Blocking Peptides](#)
- [Dot Blot](#)
- [Immunohistochemistry](#)
- [Immunofluorescence](#)
- [Immunoprecipitation](#)
- [Flow Cytometry](#)
- [Cell Culture](#)

**GNL2 Antibody (N-term) - Images**



GNL2 Antibody (N-term) (Cat. #AP16458a) western blot analysis in WiDr cell line lysates (35ug/lane). This demonstrates the GNL2 antibody detected the GNL2 protein (arrow).



Western blot analysis of GNL2 (arrow) using rabbit polyclonal GNL2 Antibody (N-term) (Cat. #AP16458a). 293 cell lysates (2 ug/lane) either nontransfected (Lane 1) or transiently transfected (Lane 2) with the GNL2 gene.

#### **GNL2 Antibody (N-term) - Background**

GNL2 is a GTPase that associates with pre-60S ribosomal subunits in the nucleolus and is required for their nuclear export and maturation (By similarity).

#### **GNL2 Antibody (N-term) - References**

Olsen, J.V., et al. Cell 127(3):635-648(2006) Racevskis, J., et al. Cell Growth Differ. 7(2):271-280(1996)