

ELOVL7 Antibody (C-term)
Affinity Purified Rabbit Polyclonal Antibody (Pab)
Catalog # AP16487b**Specification**

ELOVL7 Antibody (C-term) - Product Information

Application	WB,E
Primary Accession	A1L3X0
Other Accession	NP_079206.2
Reactivity	Human, Mouse
Host	Rabbit
Clonality	Polyclonal
Isotype	Rabbit IgG
Calculated MW	33356
Antigen Region	244-273

ELOVL7 Antibody (C-term) - Additional Information**Gene ID** 79993**Other Names**

Elongation of very long chain fatty acids protein 7, 3-keto acyl-CoA synthase ELOVL7, ELOVL fatty acid elongase 7, ELOVL FA elongase 7, Very-long-chain 3-oxoacyl-CoA synthase 7, ELOVL7

Target/Specificity

This ELOVL7 antibody is generated from rabbits immunized with a KLH conjugated synthetic peptide between 244-273 amino acids from the C-terminal region of human ELOVL7.

Dilution

WB~~1:1000

Format

Purified polyclonal antibody supplied in PBS with 0.09% (W/V) sodium azide. This antibody is purified through a protein A column, followed by peptide affinity purification.

Storage

Maintain refrigerated at 2-8°C for up to 2 weeks. For long term storage store at -20°C in small aliquots to prevent freeze-thaw cycles.

Precautions

ELOVL7 Antibody (C-term) is for research use only and not for use in diagnostic or therapeutic procedures.

ELOVL7 Antibody (C-term) - Protein Information**Name** ELOVL7 {ECO:0000255|HAMAP-Rule:MF_03207}**Function** Catalyzes the first and rate-limiting reaction of the four reactions that constitute the

long-chain fatty acids elongation cycle. This endoplasmic reticulum-bound enzymatic process allows the addition of 2 carbons to the chain of long- and very long-chain fatty acids (VLCFAs) per cycle. Condensing enzyme with higher activity toward C18 acyl-CoAs, especially C18:3(n-3) acyl-CoAs and C18:3(n-6)-CoAs. Also active toward C20:4-, C18:0-, C18:1-, C18:2- and C16:0-CoAs, and weakly toward C20:0-CoA. Little or no activity toward C22:0-, C24:0-, or C26:0-CoAs. May participate in the production of saturated and polyunsaturated VLCFAs of different chain lengths that are involved in multiple biological processes as precursors of membrane lipids and lipid mediators.

Cellular Location

Endoplasmic reticulum membrane {ECO:0000255|HAMAP-Rule:MF_03207, ECO:0000269|PubMed:20937905}; Multi-pass membrane protein {ECO:0000255|HAMAP-Rule:MF_03207}

Tissue Location

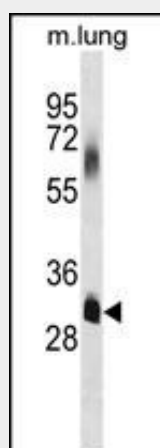
Expressed in most tissues except heart and skeletal muscle.

ELOVL7 Antibody (C-term) - Protocols

Provided below are standard protocols that you may find useful for product applications.

- [Western Blot](#)
- [Blocking Peptides](#)
- [Dot Blot](#)
- [Immunohistochemistry](#)
- [Immunofluorescence](#)
- [Immunoprecipitation](#)
- [Flow Cytometry](#)
- [Cell Culture](#)

ELOVL7 Antibody (C-term) - Images



ELOVL7 Antibody (C-term) (Cat. #AP16487b) western blot analysis in mouse lung tissue lysates (35ug/lane). This demonstrates the ELOVL7 antibody detected the ELOVL7 protein (arrow).

ELOVL7 Antibody (C-term) - Background

ELOVL7 could be implicated in synthesis of very long chain fatty acids and sphingolipids (By similarity).

ELOVL7 Antibody (C-term) - References

Rose, J.E., et al. Mol. Med. 16 (7-8), 247-253 (2010) :
Tamura, K., et al. Cancer Res. 69(20):8133-8140(2009)
Lehner, R., et al. Prog. Lipid Res. 35(2):169-201(1996)