

**PHF21A Antibody (Center)**  
**Affinity Purified Rabbit Polyclonal Antibody (Pab)**  
**Catalog # AP16505c**

**Specification**

---

**PHF21A Antibody (Center) - Product Information**

Application	WB,E
Primary Accession	<a href="#">O96BD5</a>
Other Accession	<a href="#">O6ZPK0</a> , <a href="#">NP_057705.3</a>
Reactivity	Human
Predicted	Mouse
Host	Rabbit
Clonality	Polyclonal
Isotype	Rabbit IgG
Calculated MW	74854
Antigen Region	436-464

**PHF21A Antibody (Center) - Additional Information**

**Gene ID** 51317

**Other Names**

PHD finger protein 21A, BHC80a, BRAF35-HDAC complex protein BHC80, PHF21A, BHC80, KIAA1696

**Target/Specificity**

This PHF21A antibody is generated from rabbits immunized with a KLH conjugated synthetic peptide between 436-464 amino acids from the Central region of human PHF21A.

**Dilution**

WB~~1:1000

**Format**

Purified polyclonal antibody supplied in PBS with 0.09% (W/V) sodium azide. This antibody is purified through a protein A column, followed by peptide affinity purification.

**Storage**

Maintain refrigerated at 2-8°C for up to 2 weeks. For long term storage store at -20°C in small aliquots to prevent freeze-thaw cycles.

**Precautions**

PHF21A Antibody (Center) is for research use only and not for use in diagnostic or therapeutic procedures.

**PHF21A Antibody (Center) - Protein Information**

**Name** PHF21A

**Synonyms** BHC80, KIAA1696

**Function** Component of the BHC complex, a corepressor complex that represses transcription of neuron-specific genes in non-neuronal cells. The BHC complex is recruited at RE1/NRSE sites by REST and acts by deacetylating and demethylating specific sites on histones, thereby acting as a chromatin modifier. In the BHC complex, it may act as a scaffold. Inhibits KDM1A-mediated demethylation of 'Lys-4' of histone H3 in vitro, suggesting a role in demethylation regulation.

**Cellular Location**

Nucleus.

**Tissue Location**

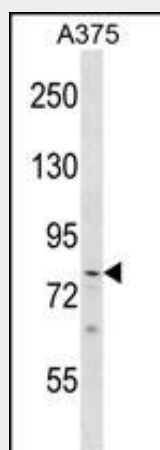
Highly expressed in brain (PubMed:31649809). Expressed at lower level in other tissues, including heart, kidney, liver, lung and skeletal muscle (PubMed:31649809). Abundantly expressed in fetal brain (PubMed:31649809).

**PHF21A Antibody (Center) - Protocols**

Provided below are standard protocols that you may find useful for product applications.

- [Western Blot](#)
- [Blocking Peptides](#)
- [Dot Blot](#)
- [Immunohistochemistry](#)
- [Immunofluorescence](#)
- [Immunoprecipitation](#)
- [Flow Cytometry](#)
- [Cell Culture](#)

**PHF21A Antibody (Center) - Images**



PHF21A Antibody (Center) (Cat. #AP16505c) western blot analysis in A375 cell line lysates (35ug/lane). This demonstrates the PHF21A antibody detected the PHF21A protein (arrow).

**PHF21A Antibody (Center) - Background**

The PHF21A gene encodes BHC80, a component of a BRAF35 (MIM 605535)/histone deacetylase (HDAC; see MIM 601241) complex (BHC) that mediates repression of neuron-specific genes through the cis-regulatory element known as repressor element-1 (RE1) or neural

restrictive silencer (NRS) (Hakimi et al., 2002 [PubMed 12032298]).

#### **PHF21A Antibody (Center) - References**

Rose, J.E., et al. Mol. Med. 16 (7-8), 247-253 (2010) :  
Klajn, A., et al. J. Neurosci. 29(19):6296-6307(2009)  
Hailesellasse Sene, K., et al. BMC Genomics 8, 85 (2007) :  
Shi, Y.J., et al. Mol. Cell 19(6):857-864(2005)  
Iwase, S., et al. Biochem. Biophys. Res. Commun. 322(2):601-608(2004)