

**GPLOW Antibody (Center)**  
**Affinity Purified Rabbit Polyclonal Antibody (Pab)**  
**Catalog # AP16513c****Specification**

---

**GPLOW Antibody (Center) - Product Information**

Application	WB,E
Primary Accession	<a href="#">O92917</a>
Other Accession	<a href="#">NP_056513.2</a>
Reactivity	Human
Host	Rabbit
Clonality	Polyclonal
Isotype	Rabbit IgG
Calculated MW	52229
Antigen Region	309-338

**GPLOW Antibody (Center) - Additional Information****Gene ID** 27238**Other Names**

G patch domain and KOW motifs-containing protein, G patch domain-containing protein 5, Protein MOS2 homolog, Protein T54, GPLOW, GPATC5, GPATCH5, T54

**Target/Specificity**

This GPLOW antibody is generated from rabbits immunized with a KLH conjugated synthetic peptide between 309-338 amino acids from the Central region of human GPLOW.

**Dilution**

WB~~1:1000

**Format**

Purified polyclonal antibody supplied in PBS with 0.09% (W/V) sodium azide. This antibody is purified through a protein A column, followed by peptide affinity purification.

**Storage**

Maintain refrigerated at 2-8°C for up to 2 weeks. For long term storage store at -20°C in small aliquots to prevent freeze-thaw cycles.

**Precautions**

GPLOW Antibody (Center) is for research use only and not for use in diagnostic or therapeutic procedures.

**GPLOW Antibody (Center) - Protein Information****Name** GPLOW**Synonyms** GPATC5, GPATCH5, T54

**Function** RNA-binding protein involved in pre-mRNA splicing. As a component of the minor spliceosome, involved in the splicing of U12- type introns in pre-mRNAs (Probable).

**Cellular Location**

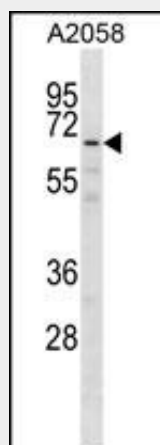
Nucleus

**GPKOW Antibody (Center) - Protocols**

Provided below are standard protocols that you may find useful for product applications.

- [Western Blot](#)
- [Blocking Peptides](#)
- [Dot Blot](#)
- [Immunohistochemistry](#)
- [Immunofluorescence](#)
- [Immunoprecipitation](#)
- [Flow Cytometry](#)
- [Cell Culture](#)

**GPKOW Antibody (Center) - Images**



GPKOW Antibody (Center) (Cat. #AP16513c) western blot analysis in A2058 cell line lysates (35ug/lane). This demonstrates the GPKOW antibody detected the GPKOW protein (arrow).

**GPKOW Antibody (Center) - Background**

T54, also known as GPKOW (G patch domain and KOW motifs), GPATC5 or GPATCH5 (G patch domain-containing protein 5), is a potential RNA-binding protein consisting of one central G patch domain and two C-terminal KOW domains. T54 is a 476 amino acid protein belonging to the MOS2 family. It is a mammalian homolog of the Arabidopsis thaliana MOS2 (modifier of SNC1, 2) nuclear protein that is required for innate immunity. Similar to A. thaliana MOS2, T54 localizes to the nucleus and contains G patch and KOW domains, suggesting that T54 may play a similar role in mammalian innate immunity.

**GPKOW Antibody (Center) - References**

Lamesch, P., et al. Genomics 89(3):307-315(2007)  
Olsen, J.V., et al. Cell 127(3):635-648(2006)  
Olsen, J.V., et al. Cell 127(3):635-648(2006)  
Zhang, Y., et al. Curr. Biol. 15(21):1936-1942(2005)

Schindelhauer, D., et al. Genome Res. 6(11):1056-1069(1996)