

**CCRL2 Antibody (Center)**  
**Affinity Purified Rabbit Polyclonal Antibody (Pab)**  
**Catalog # AP16519c**

**Specification**

---

**CCRL2 Antibody (Center) - Product Information**

Application	WB,E
Primary Accession	<a href="#">O00421</a>
Other Accession	<a href="#">NP_003956.2</a>
Reactivity	Human
Host	Rabbit
Clonality	Polyclonal
Isotype	Rabbit IgG
Calculated MW	39513
Antigen Region	206-234

**CCRL2 Antibody (Center) - Additional Information**

**Gene ID** 9034

**Other Names**

C-C chemokine receptor-like 2, Chemokine receptor CCR11, Chemokine receptor X, Putative MCP-1 chemokine receptor, CCRL2, CCR11, CCR6, CKRX, CRAM, HCR

**Target/Specificity**

This CCRL2 antibody is generated from rabbits immunized with a KLH conjugated synthetic peptide between 206-234 amino acids from the Central region of human CCRL2.

**Dilution**

WB~~1:1000

**Format**

Purified polyclonal antibody supplied in PBS with 0.09% (W/V) sodium azide. This antibody is purified through a protein A column, followed by peptide affinity purification.

**Storage**

Maintain refrigerated at 2-8°C for up to 2 weeks. For long term storage store at -20°C in small aliquots to prevent freeze-thaw cycles.

**Precautions**

CCRL2 Antibody (Center) is for research use only and not for use in diagnostic or therapeutic procedures.

**CCRL2 Antibody (Center) - Protein Information**

**Name** CCRL2

**Synonyms** CCR11, CCR6, CKRX, CRAM, HCR

**Function** Receptor for CCL19 and chemerin/RARRES2. Does not appear to be a signaling receptor, but may have a role in modulating chemokine- triggered immune responses by capturing and internalizing CCL19 or by presenting RARRES2 ligand to CMKLR1, a functional signaling receptors. Plays a critical role for the development of Th2 responses.

#### **Cellular Location**

Cell membrane; Multi-pass membrane protein

#### **Tissue Location**

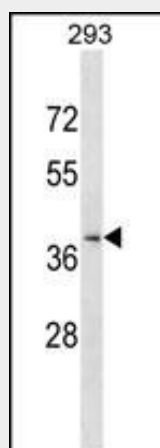
Expressed abundantly in immunal tissues such as spleen, fetal liver, lymph node and bone marrow. Strong expression also in lung and heart. Expressed in almost all hematopoietic cells including monocytes, macrophages, PMNs, T-cells (both CD4+ and CD8+), monocyte-derived iDCs, NK cells, and CD34+ progenitor cells. B-cells expressed isoform 1 but not isoform 2. Up-regulated on synovial neutrophils of rheumatoid arthritis patients

### **CCRL2 Antibody (Center) - Protocols**

Provided below are standard protocols that you may find useful for product applications.

- [Western Blot](#)
- [Blocking Peptides](#)
- [Dot Blot](#)
- [Immunohistochemistry](#)
- [Immunofluorescence](#)
- [Immunoprecipitation](#)
- [Flow Cytometry](#)
- [Cell Culture](#)

### **CCRL2 Antibody (Center) - Images**



CCRL2 Antibody (Center) (Cat. #AP16519c) western blot analysis in 293 cell line lysates (35ug/lane). This demonstrates the CCRL2 antibody detected the CCRL2 protein (arrow).

### **CCRL2 Antibody (Center) - Background**

This gene encodes a chemokine receptor like protein, which is predicted to be a seven transmembrane protein and most closely related to CCR1. Chemokines and their receptors mediated signal transduction are critical for the recruitment of effector immune cells to the site of inflammation. This gene is expressed at high

levels in primary neutrophils and primary monocytes, and is further upregulated on neutrophil activation and during monocyte to macrophage differentiation. The function of this gene is unknown. This gene is mapped to the region where the chemokine receptor gene cluster is located.

#### **CCRL2 Antibody (Center) - References**

Shimada, M., et al. Hum. Genet. 128(4):433-441(2010)  
Dubois, P.C., et al. Nat. Genet. 42(4):295-302(2010)  
Leick, M., et al. Immunology 129(4):536-546(2010)  
Segat, L., et al. Vaccine 28(10):2201-2206(2010)  
Zabel, B.A., et al. J. Exp. Med. 205(10):2207-2220(2008)