

DND1 Antibody (Center)
Affinity Purified Rabbit Polyclonal Antibody (Pab)
Catalog # AP16527c**Specification**

DND1 Antibody (Center) - Product Information

Application	WB,E
Primary Accession	Q8IYX4
Other Accession	NP_919225.1
Reactivity	Human
Host	Rabbit
Clonality	Polyclonal
Isotype	Rabbit IgG
Calculated MW	38687
Antigen Region	198-226

DND1 Antibody (Center) - Additional Information**Gene ID** 373863**Other Names**

Dead end protein homolog 1, RNA-binding motif, single-stranded-interacting protein 4, DND1, RBMS4

Target/Specificity

This DND1 antibody is generated from rabbits immunized with a KLH conjugated synthetic peptide between 198-226 amino acids from the Central region of human DND1.

Dilution

WB~~1:1000

Format

Purified polyclonal antibody supplied in PBS with 0.09% (W/V) sodium azide. This antibody is purified through a protein A column, followed by peptide affinity purification.

Storage

Maintain refrigerated at 2-8°C for up to 2 weeks. For long term storage store at -20°C in small aliquots to prevent freeze-thaw cycles.

Precautions

DND1 Antibody (Center) is for research use only and not for use in diagnostic or therapeutic procedures.

DND1 Antibody (Center) - Protein Information**Name** DND1**Synonyms** RBMS4

Function RNA-binding factor that positively regulates gene expression by prohibiting miRNA-mediated gene suppression. Relieves miRNA repression in germline cells (By similarity). Prohibits the function of several miRNAs by blocking the accessibility of target mRNAs. Sequence-specific RNA-binding factor that binds specifically to U-rich regions (URRs) in the 3' untranslated region (3'-UTR) of several mRNAs. Does not bind to miRNAs. May play a role during primordial germ cell (PGC) survival (By similarity). However, does not seem to be essential for PGC migration (By similarity).

Cellular Location

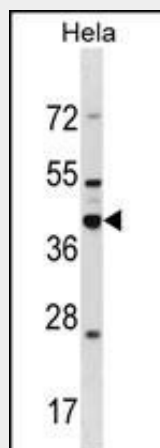
Nucleus. Cytoplasm. Note=Perinuclear germ granules, also called germ plasm or chromatoid body. Colocalizes in perinuclear sites with APOBEC3 (By similarity).

DND1 Antibody (Center) - Protocols

Provided below are standard protocols that you may find useful for product applications.

- [Western Blot](#)
- [Blocking Peptides](#)
- [Dot Blot](#)
- [Immunohistochemistry](#)
- [Immunofluorescence](#)
- [Immunoprecipitation](#)
- [Flow Cytometry](#)
- [Cell Culture](#)

DND1 Antibody (Center) - Images



DND1 Antibody (Center) (Cat. #AP16527c) western blot analysis in HeLa cell line lysates (35ug/lane). This demonstrates the DND1 antibody detected the DND1 protein (arrow).

DND1 Antibody (Center) - Background

This gene encodes a protein that binds to microRNA-targeting sequences of mRNAs, inhibiting microRNA-mediated repression. Reduced expression of this gene has been implicated in tongue squamous cell carcinoma. Two pseudogenes of this gene are located on the long arm of chromosome 17.

DND1 Antibody (Center) - References

Liu, X., et al. FEBS Lett. 584(18):4115-4120(2010)
Sijmons, R.H., et al. Fam. Cancer 9(3):439-442(2010)
Kedde, M., et al. Cell Cycle 7(7):899-903(2008)
Linger, R., et al. Genes Chromosomes Cancer 47(3):247-252(2008)
Ketting, R.F. Cell 131(7):1226-1227(2007)