

SH3PXD2A Antibody (N-term)
Affinity Purified Rabbit Polyclonal Antibody (Pab)
Catalog # AP16560a**Specification**

SH3PXD2A Antibody (N-term) - Product Information

Application	WB,E
Primary Accession	O5TCZ1
Other Accession	O89032 , NP_055446.2
Reactivity	Human
Predicted	Mouse
Host	Rabbit
Clonality	Polyclonal
Isotype	Rabbit IgG
Calculated MW	125289
Antigen Region	222-250

SH3PXD2A Antibody (N-term) - Additional Information**Gene ID** 9644**Other Names**

SH3 and PX domain-containing protein 2A, Adapter protein TKS5, Five SH3 domain-containing protein, SH3 multiple domains protein 1, Tyrosine kinase substrate with five SH3 domains, SH3PXD2A, FISH, KIAA0418, SH3MD1, TKS5

Target/Specificity

This SH3PXD2A antibody is generated from rabbits immunized with a KLH conjugated synthetic peptide between 222-250 amino acids from the N-terminal region of human SH3PXD2A.

Dilution

WB~~1:1000

Format

Purified polyclonal antibody supplied in PBS with 0.09% (W/V) sodium azide. This antibody is purified through a protein A column, followed by peptide affinity purification.

Storage

Maintain refrigerated at 2-8°C for up to 2 weeks. For long term storage store at -20°C in small aliquots to prevent freeze-thaw cycles.

Precautions

SH3PXD2A Antibody (N-term) is for research use only and not for use in diagnostic or therapeutic procedures.

SH3PXD2A Antibody (N-term) - Protein Information**Name** SH3PXD2A

Synonyms FISH, KIAA0418, SH3MD1, TKS5

Function Adapter protein involved in invadopodia and podosome formation, extracellular matrix degradation and invasiveness of some cancer cells. Binds matrix metalloproteinases (ADAMs), NADPH oxidases (NOXs) and phosphoinositides. Acts as an organizer protein that allows NOX1- or NOX3-dependent reactive oxygen species (ROS) generation and ROS localization. In association with ADAM12, mediates the neurotoxic effect of amyloid-beta peptide.

Cellular Location

Cytoplasm. Cell projection, podosome. Note=Cytoplasmic in normal cells and localizes to podosomes in SRC- transformed cells

Tissue Location

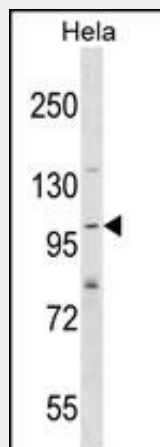
Found in several cancer cell lines, particularly invasive breast carcinomas and melanomas

SH3PXD2A Antibody (N-term) - Protocols

Provided below are standard protocols that you may find useful for product applications.

- [Western Blot](#)
- [Blocking Peptides](#)
- [Dot Blot](#)
- [Immunohistochemistry](#)
- [Immunofluorescence](#)
- [Immunoprecipitation](#)
- [Flow Cytometry](#)
- [Cell Culture](#)

SH3PXD2A Antibody (N-term) - Images



SH3PXD2A Antibody (N-term) (Cat. #AP16560a) western blot analysis in HeLa cell line lysates (35ug/lane). This demonstrates the SH3PXD2A antibody detected the SH3PXD2A protein (arrow).

SH3PXD2A Antibody (N-term) - Background

SH3PXD2A is required for podosome formation, degradation of the extracellular matrix, and for the invasiveness of some cancer cells. Binds phosphatidylinositol 3-phosphate (PtdIns(3)P) and phosphatidylinositol 3,4-bisphosphate (PtdIns(3,4)P2). In association with ADAM12, mediates the neurotoxic effect of beta-amyloid peptide.

SH3PXD2A Antibody (N-term) - References

Rose, J.E., et al. Mol. Med. 16 (7-8), 247-253 (2010) :
Laumet, G., et al. Neurosci. Lett. 468(1):1-2(2010)
Crimaldi, L., et al. Exp. Cell Res. 315(15):2581-2592(2009)
Voss, M., et al. BMC Immunol. 10, 53 (2009) :
Gianni, D., et al. Sci Signal 2 (88), RA54 (2009) :