

**MRC1L1 Antibody (N-term)**  
**Affinity Purified Rabbit Polyclonal Antibody (Pab)**  
**Catalog # AP16595a**

**Specification**

---

**MRC1L1 Antibody (N-term) - Product Information**

Application	WB,E
Primary Accession	<a href="#">P22897</a>
Other Accession	<a href="#">Q5VSK2</a> , <a href="#">NP_001009567.1</a>
Reactivity	Human, Mouse
Host	Rabbit
Clonality	Polyclonal
Isotype	Rabbit IgG
Antigen Region	359-388

**MRC1L1 Antibody (N-term) - Additional Information**

**Gene ID** 4360

**Other Names**

Macrophage mannose receptor 1, MMR, C-type lectin domain family 13 member D, C-type lectin domain family 13 member D-like, Macrophage mannose receptor 1-like protein 1, CD206, MRC1, CLEC13D, CLEC13DL, MRC1L1

**Target/Specificity**

This MRC1L1 antibody is generated from rabbits immunized with a KLH conjugated synthetic peptide between 359-388 amino acids from the N-terminal region of human MRC1L1.

**Dilution**

WB~~1:2000

**Format**

Purified polyclonal antibody supplied in PBS with 0.09% (W/V) sodium azide. This antibody is purified through a protein A column, followed by peptide affinity purification.

**Storage**

Maintain refrigerated at 2-8°C for up to 2 weeks. For long term storage store at -20°C in small aliquots to prevent freeze-thaw cycles.

**Precautions**

MRC1L1 Antibody (N-term) is for research use only and not for use in diagnostic or therapeutic procedures.

**MRC1L1 Antibody (N-term) - Protein Information**

**Name** MRC1

**Synonyms** CLEC13D, CLEC13DL, MRC1L1

**Function** Mediates the endocytosis of glycoproteins by macrophages. Binds both sulfated and non-sulfated polysaccharide chains. (Microbial infection) Acts as a receptor for Dengue virus envelope protein E.

#### Cellular Location

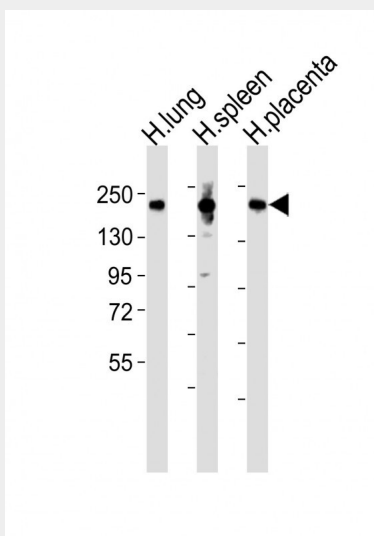
Endosome membrane; Single-pass type I membrane protein. Cell membrane; Single-pass type I membrane protein

### MRC1L1 Antibody (N-term) - Protocols

Provided below are standard protocols that you may find useful for product applications.

- [Western Blot](#)
- [Blocking Peptides](#)
- [Dot Blot](#)
- [Immunohistochemistry](#)
- [Immunofluorescence](#)
- [Immunoprecipitation](#)
- [Flow Cytometry](#)
- [Cell Culture](#)

### MRC1L1 Antibody (N-term) - Images



All lanes : Anti-MRC1L1 Antibody (N-term) at 1:2000 dilution Lane 1: human lung lysates Lane 2: human spleen lysates Lane 3: human placenta lysates Lysates/proteins at 20 µg per lane. Secondary Goat Anti-Rabbit IgG, (H+L), Peroxidase conjugated at 1/10000 dilution Predicted band size : 166 kDa Blocking/Dilution buffer: 5% NFDM/TBST.

### MRC1L1 Antibody (N-term) - Background

This gene encodes a type I membrane receptor protein highly related to the mannose receptor C type 1 protein (MRC1). The two genes are located near each other on chromosome 10 in a region thought to represent a segmental duplication.

### MRC1L1 Antibody (N-term) - References

Kamatani, Y., et al. Nat. Genet. 42(3):210-215(2010)