

PRR7 Antibody (C-term)
Affinity Purified Rabbit Polyclonal Antibody (Pab)
Catalog # AP16611B

Specification

PRR7 Antibody (C-term) - Product Information

Application	WB,E
Primary Accession	Q8TB68
Other Accession	P0C6T3 , Q3V0I2 , NP_085044.2 , NP_001167573.1 , NP_001167572.1
Reactivity	Human
Predicted	Mouse, Rat
Host	Rabbit
Clonality	Polyclonal
Isotype	Rabbit IgG
Calculated MW	30930
Antigen Region	171-199

PRR7 Antibody (C-term) - Additional Information

Gene ID 80758

Other Names

Proline-rich protein 7, Synaptic proline-rich membrane protein, PRR7

Target/Specificity

This PRR7 antibody is generated from rabbits immunized with a KLH conjugated synthetic peptide between 171-199 amino acids from the C-terminal region of human PRR7.

Dilution

WB~~1:1000

Format

Purified polyclonal antibody supplied in PBS with 0.09% (W/V) sodium azide. This antibody is purified through a protein A column, followed by peptide affinity purification.

Storage

Maintain refrigerated at 2-8°C for up to 2 weeks. For long term storage store at -20°C in small aliquots to prevent freeze-thaw cycles.

Precautions

PRR7 Antibody (C-term) is for research use only and not for use in diagnostic or therapeutic procedures.

PRR7 Antibody (C-term) - Protein Information

Name PRR7

Function Acts as a synapse-to-nucleus messenger to promote NMDA receptor-mediated excitotoxicity in neurons in a JUN-dependent manner (By similarity). Inhibits ubiquitination-mediated degradation and promotes phosphorylation and transcriptional activity of transcription factor JUN (PubMed:[27458189](#)). Might play a redundant role in the regulation of T cell receptor signaling (PubMed:[21460222](#)). Might promote apoptosis in T cells (PubMed:[21460222](#)).

Cellular Location

Cell membrane; Single-pass type III membrane protein. Postsynaptic cell membrane {ECO:0000250|UniProtKB:P0C6T3}; Single-pass type III membrane protein. Postsynaptic density membrane {ECO:0000250|UniProtKB:P0C6T3}. Cytoplasm, perinuclear region. Synapse Cell projection, dendrite. Nucleus. Note=Enriched in postsynaptic plasma membrane and postsynaptic densities (PSD). Accumulates in spines along with synapse maturation and colocalizes with DLG4 in a punctate pattern. Translocates from synapses to nuclei following NMDA receptor activity (By similarity). {ECO:0000250|UniProtKB:P0C6T3}

Tissue Location

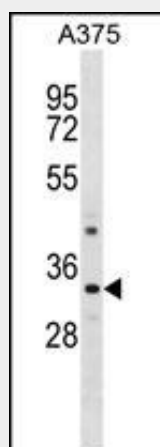
Strongly expressed in brain tissue including the hippocampus, and moderately expressed in esophagus, trachea, lung, ovary, cervix, prostate, testes, thyroid, thymus, lymph nodes and peripheral blood lymphocytes.

PRR7 Antibody (C-term) - Protocols

Provided below are standard protocols that you may find useful for product applications.

- [Western Blot](#)
- [Blocking Peptides](#)
- [Dot Blot](#)
- [Immunohistochemistry](#)
- [Immunofluorescence](#)
- [Immunoprecipitation](#)
- [Flow Cytometry](#)
- [Cell Culture](#)

PRR7 Antibody (C-term) - Images



PRR7 Antibody (C-term) (Cat. #AP16611b) western blot analysis in A375 cell line lysates (35ug/lane). This demonstrates the PRR7 antibody detected the PRR7 protein (arrow).

PRR7 Antibody (C-term) - Background

Found in a postsynaptic membrane complex with DLG4 and GRIN1. Interacts with DLG4. Interacts preferentially to the PDZ3 domain of DLG4 and to lesser degree to PDZ2 but not to the PDZ1.

PRR7 Antibody (C-term) - References

Kottgen, A., et al. Nat. Genet. 42(5):376-384(2010)

Lamesch, P., et al. Genomics 89(3):307-315(2007)

Murata, Y., et al. Biochem. Biophys. Res. Commun. 327(1):183-191(2005)