

BEND3 Antibody (C-term)
Affinity Purified Rabbit Polyclonal Antibody (Pab)
Catalog # AP16612b**Specification**

BEND3 Antibody (C-term) - Product Information

Application	WB,E
Primary Accession	Q5T5X7
Other Accession	Q6PAL0 , NP_001073919.1
Reactivity	Human
Predicted	Mouse
Host	Rabbit
Clonality	Polyclonal
Isotype	Rabbit IgG
Calculated MW	94475
Antigen Region	629-657

BEND3 Antibody (C-term) - Additional Information**Gene ID** 57673**Other Names**

BEN domain-containing protein 3, BEND3, KIAA1553

Target/Specificity

This BEND3 antibody is generated from rabbits immunized with a KLH conjugated synthetic peptide between 629-657 amino acids from the C-terminal region of human BEND3.

Dilution

WB~~1:1000

Format

Purified polyclonal antibody supplied in PBS with 0.09% (W/V) sodium azide. This antibody is purified through a protein A column, followed by peptide affinity purification.

Storage

Maintain refrigerated at 2-8°C for up to 2 weeks. For long term storage store at -20°C in small aliquots to prevent freeze-thaw cycles.

Precautions

BEND3 Antibody (C-term) is for research use only and not for use in diagnostic or therapeutic procedures.

BEND3 Antibody (C-term) - Protein Information**Name** BEND3**Synonyms** KIAA1553

Function Transcriptional repressor which associates with the NoRC (nucleolar remodeling complex) complex and plays a key role in repressing rDNA transcription. The sumoylated form modulates the stability of the NoRC complex component BAZ2A/TIP5 by controlling its USP21-mediated deubiquitination (PubMed:[21914818](#), PubMed:[26100909](#)). Binds to unmethylated major satellite DNA and is involved in the recruitment of the Polycomb repressive complex 2 (PRC2) to major satellites (By similarity). Stimulates the ERCC6L translocase and ATPase activities (PubMed:[28977671](#)).

Cellular Location

Nucleus. Nucleus, nucleolus. Note=In the nucleus, observed in heterochromatic foci containing CBX1, CBX3, CBX5 and histone H3 trimethylated at 'Lys-9'. Released from chromatin during decondensation. Association with heterochromatin does not depend on sumoylation.

Tissue Location

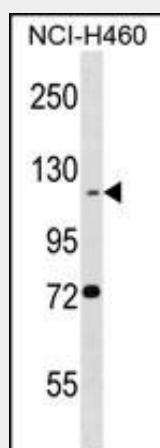
Expressed at least in heart, kidney, liver, ovary and spleen, with highest levels in spleen and lowest in heart Expressed on the surface of T-cells.

BEND3 Antibody (C-term) - Protocols

Provided below are standard protocols that you may find useful for product applications.

- [Western Blot](#)
- [Blocking Peptides](#)
- [Dot Blot](#)
- [Immunohistochemistry](#)
- [Immunofluorescence](#)
- [Immunoprecipitation](#)
- [Flow Cytometry](#)
- [Cell Culture](#)

BEND3 Antibody (C-term) - Images



BEND3 Antibody (C-term) (Cat. #AP16612b) western blot analysis in NCI-H460 cell line lysates (35ug/lane). This demonstrates the BEND3 antibody detected the BEND3 protein (arrow).

BEND3 Antibody (C-term) - References

- Vertegaal, A.C., et al. Mol. Cell Proteomics 5(12):2298-2310(2006)
Olsen, J.V., et al. Cell 127(3):635-648(2006)
Strausberg, R.L., et al. Proc. Natl. Acad. Sci. U.S.A. 99(26):16899-16903(2002)