

DNALI1 Antibody (C-term)
Affinity Purified Rabbit Polyclonal Antibody (Pab)
Catalog # AP16623b**Specification**

DNALI1 Antibody (C-term) - Product Information

Application	WB,E
Primary Accession	O14645
Other Accession	Q4FZV3 , Q8BVN8 , Q4R3K5 , NP_003453.2
Reactivity	Human
Predicted	Monkey, Mouse, Rat
Host	Rabbit
Clonality	Polyclonal
Isotype	Rabbit IgG
Calculated MW	29662
Antigen Region	215-243

DNALI1 Antibody (C-term) - Additional Information**Gene ID** 7802**Other Names**

Axonemal dynein light intermediate polypeptide 1, Inner dynein arm light chain, axonemal, hp28, DNALI1

Target/Specificity

This DNALI1 antibody is generated from rabbits immunized with a KLH conjugated synthetic peptide between 215-243 amino acids from the C-terminal region of human DNALI1.

Dilution

WB~~1:1000

Format

Purified polyclonal antibody supplied in PBS with 0.09% (W/V) sodium azide. This antibody is purified through a protein A column, followed by peptide affinity purification.

Storage

Maintain refrigerated at 2-8°C for up to 2 weeks. For long term storage store at -20°C in small aliquots to prevent freeze-thaw cycles.

Precautions

DNALI1 Antibody (C-term) is for research use only and not for use in diagnostic or therapeutic procedures.

DNALI1 Antibody (C-term) - Protein Information**Name** DNALI1 ([HGNC:14353](#))

Function Involved in sperm flagellum assembly.

Cellular Location

Cell projection, cilium. Cell projection, cilium, flagellum. Dynein axonemal particle {ECO:0000250|UniProtKB:Q6GN86}. Cytoplasm

Tissue Location

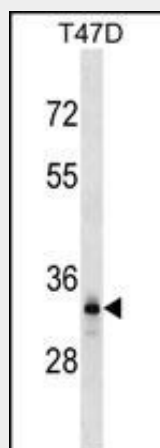
Expressed in many tissues. A smaller 0.9 kb and a larger 2.5 kb transcripts were detected at the highest level in the testis, at medium levels in the prostate, heart, liver, lung and pancreas, at low levels in the ovary, skeletal muscle and small intestine. Not detected in spleen, colon epithelium, thymus or peripheral blood leukocytes. The 0.9 kb transcript is expressed at a 20-fold higher level than the 2.5 kb transcript in the testis Expressed in spermatozoa and airway epithelial cells (at protein level) (PubMed:31178125).

DNALI1 Antibody (C-term) - Protocols

Provided below are standard protocols that you may find useful for product applications.

- [Western Blot](#)
- [Blocking Peptides](#)
- [Dot Blot](#)
- [Immunohistochemistry](#)
- [Immunofluorescence](#)
- [Immunoprecipitation](#)
- [Flow Cytometry](#)
- [Cell Culture](#)

DNALI1 Antibody (C-term) - Images



DNALI1 Antibody (C-term) (Cat. #AP16623b) western blot analysis in T47D cell line lysates (35ug/lane). This demonstrates the DNALI1 antibody detected the DNALI1 protein (arrow).

DNALI1 Antibody (C-term) - Background

This gene is the human homolog of the Chlamydomonas inner dynein arm gene, p28. The precise function of this gene is not known, however, it is a potential candidate for immotile cilia syndrome (ICS). Ultrastructural defects of the inner dynein arms are seen in patients with ICS. Immotile mutant strains of Chlamydomonas, a biflagellated algae, exhibit similar defects.

DNALI1 Antibody (C-term) - References

Rose, J.E., et al. Mol. Med. 16 (7-8), 247-253 (2010) :
Lamesch, P., et al. Genomics 89(3):307-315(2007)
Combs, J., et al. Proc. Natl. Acad. Sci. U.S.A. 103(40):14883-14888(2006)
Kastury, K., et al. J. Clin. Endocrinol. Metab. 82(9):3047-3053(1997)