

LEP Antibody (N-term)
Affinity Purified Rabbit Polyclonal Antibody (Pab)
Catalog # AP16666a**Specification**

LEP Antibody (N-term) - Product Information

Application	IF, WB, IHC-P, FC,E
Primary Accession	P41159
Other Accession	P41160 , NP_000221.1
Reactivity	Human
Predicted	Mouse
Host	Rabbit
Clonality	Polyclonal
Isotype	Rabbit IgG
Calculated MW	18641
Antigen Region	8-37

LEP Antibody (N-term) - Additional Information**Gene ID** 3952**Other Names**

Leptin, Obese protein, Obesity factor, LEP, OB, OBS

Target/Specificity

This LEP antibody is generated from rabbits immunized with a KLH conjugated synthetic peptide between 8-37 amino acids from the N-terminal region of human LEP.

Dilution

IF~~1:10~50
WB~~1:1000
IHC-P~~1:10~50
FC~~1:10~50

Format

Purified polyclonal antibody supplied in PBS with 0.09% (W/V) sodium azide. This antibody is purified through a protein A column, followed by peptide affinity purification.

Storage

Maintain refrigerated at 2-8°C for up to 2 weeks. For long term storage store at -20°C in small aliquots to prevent freeze-thaw cycles.

Precautions

LEP Antibody (N-term) is for research use only and not for use in diagnostic or therapeutic procedures.

LEP Antibody (N-term) - Protein Information

Name LEP ([HGNC:6553](#))

Function Key player in the regulation of energy balance and body weight control. Once released into the circulation, has central and peripheral effects by binding LEPR, found in many tissues, which results in the activation of several major signaling pathways (PubMed:[17344214](#), PubMed:[15899045](#), PubMed:[19688109](#)). In the hypothalamus, acts as an appetite-regulating factor that induces a decrease in food intake and an increase in energy consumption by inducing anorexigenic factors and suppressing orexigenic neuropeptides, also regulates bone mass and secretion of hypothalamo- pituitary-adrenal hormones. In the periphery, increases basal metabolism, influences reproductive function, regulates pancreatic beta-cell function and insulin secretion, is pro-angiogenic for endothelial cell and affects innate and adaptive immunity (By similarity) (PubMed:[8589726](#), PubMed:[11460888](#), PubMed:[19688109](#), PubMed:[24340098](#), PubMed:[25060689](#)). In the arcuate nucleus of the hypothalamus, activates by depolarization POMC neurons inducing FOS and SOCS3 expression to release anorexigenic peptides and inhibits by hyperpolarization NPY neurons inducing SOCS3 with a consequent reduction on release of orexigenic peptides (By similarity). In addition to its known satiety inducing effect, has a modulatory role in nutrient absorption. In the intestine, reduces glucose absorption by enterocytes by activating PKC and leading to a sequential activation of p38, PI3K and ERK signaling pathways which exerts an inhibitory effect on glucose absorption (PubMed:[24340098](#)). Acts as a growth factor on certain tissues, through the activation of different signaling pathways increases expression of genes involved in cell cycle regulation such as CCND1, via JAK2-STAT3 pathway, or VEGFA, via MAPK1/3 and PI3K-AKT1 pathways (By similarity) (PubMed:[17344214](#)). May also play an apoptotic role via JAK2-STAT3 pathway and up-regulation of BIRC5 expression (PubMed:[18242580](#)). Pro-angiogenic, has mitogenic activity on vascular endothelial cells and plays a role in matrix remodeling by regulating the expression of matrix metalloproteinases (MMPs) and tissue inhibitors of metalloproteinases (TIMPs) (PubMed:[11460888](#)). In innate immunity, modulates the activity and function of neutrophils by increasing chemotaxis and the secretion of oxygen radicals. Increases phagocytosis by macrophages and enhances secretion of pro-inflammatory mediators. Increases cytotoxic ability of NK cells (PubMed:[12504075](#)). Plays a pro-inflammatory role, in synergy with IL1B, by inducing NOS2 which promotes the production of IL6, IL8 and Prostaglandin E2, through a signaling pathway that involves JAK2, PI3K, MAP2K1/MEK1 and MAPK14/p38 (PubMed:[15899045](#), PubMed:[19688109](#)). In adaptive immunity, promotes the switch of memory T-cells towards T helper-1 cell immune responses (By similarity). Increases CD4(+)CD25(-) T-cell proliferation and reduces autophagy during TCR (T-cell receptor) stimulation, through MTOR signaling pathway activation and BCL2 up-regulation (PubMed:[25060689](#)).

Cellular Location

Secreted.

Tissue Location

Adipose tissue is the main source of leptin. It is also produced by other peripheral tissues such as the skeletal muscle (PubMed:[7789654](#), PubMed:[16052473](#), PubMed:[12448771](#)). Expressed by intercalated and striated tracts of submandibular and parotid salivary gland intralobular ducts (PubMed:[12448771](#)). Detected by fundic epithelium of the gastric mucosa (PubMed:[10896907](#)). Secreted into blood and gastric juice (PubMed:[10896907](#)).

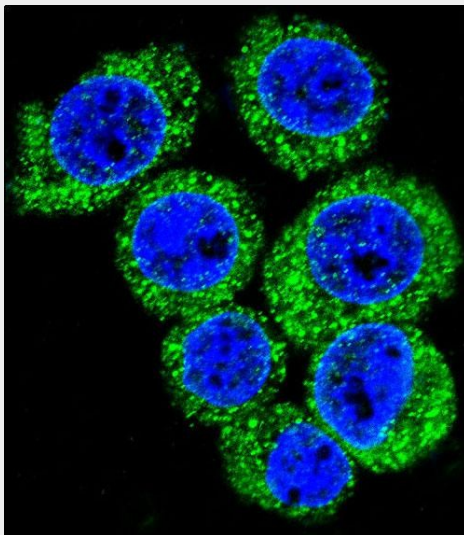
LEP Antibody (N-term) - Protocols

Provided below are standard protocols that you may find useful for product applications.

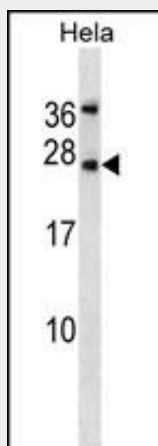
- [Western Blot](#)
- [Blocking Peptides](#)
- [Dot Blot](#)
- [Immunohistochemistry](#)
- [Immunofluorescence](#)

- [Immunoprecipitation](#)
- [Flow Cytometry](#)
- [Cell Culture](#)

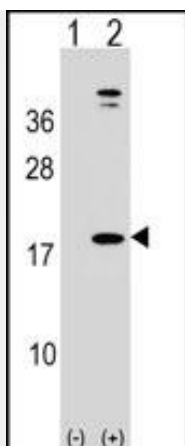
LEP Antibody (N-term) - Images



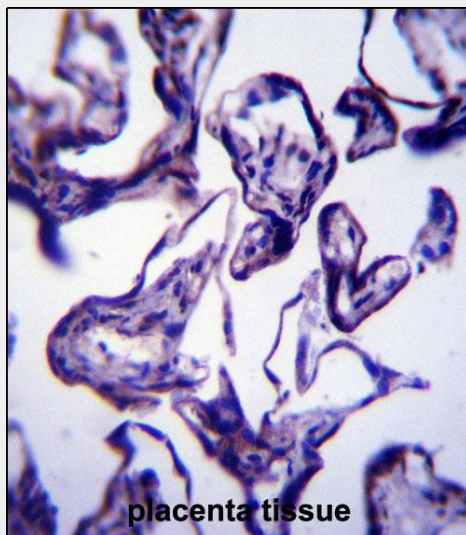
Confocal immunofluorescent analysis of LEP Antibody (N-term)(Cat#AP16666a) with HeLa cell followed by Alexa Fluor 488-conjugated goat anti-rabbit IgG (green).DAPI was used to stain the cell nuclear (blue).



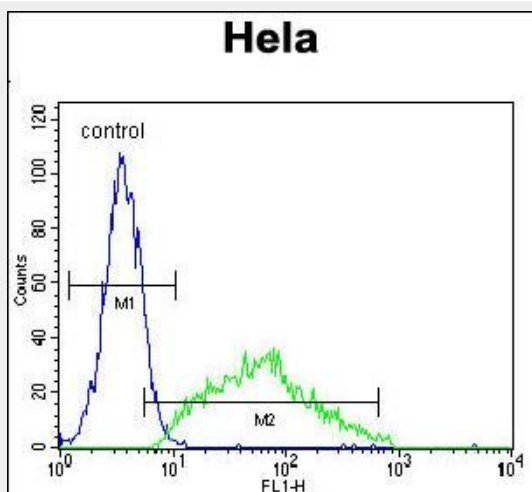
LEP Antibody (N-term) (Cat. #AP16666a) western blot analysis in HeLa cell line lysates (35ug/lane).This demonstrates the LEP antibody detected the LEP protein (arrow).



Western blot analysis of LEP (arrow) using rabbit polyclonal LEP Antibody (N-term) (Cat. #AP16666a). 293 cell lysates (2 ug/lane) either nontransfected (Lane 1) or transiently transfected (Lane 2) with the LEP gene.



LEP Antibody (N-term) (Cat. #AP16666a) immunohistochemistry analysis in formalin fixed and paraffin embedded human placenta tissue followed by peroxidase conjugation of the secondary antibody and DAB staining. This data demonstrates the use of LEP Antibody (N-term) for immunohistochemistry. Clinical relevance has not been evaluated.



LEP Antibody (N-term) (Cat. #AP16666a) flow cytometric analysis of Hela cells (right histogram) compared to a negative control cell (left histogram). FITC-conjugated goat-anti-rabbit secondary antibodies were used for the analysis.

LEP Antibody (N-term) - Background

This gene encodes a protein that is secreted by white adipocytes, and which plays a major role in the regulation of body weight. This protein, which acts through the leptin receptor, functions as part of a signaling pathway that can inhibit food intake and/or regulate energy expenditure to maintain constancy of the adipose mass. This protein also has several endocrine functions, and is involved in the regulation of immune and inflammatory responses, hematopoiesis, angiogenesis and wound healing. Mutations in this gene and/or its regulatory regions cause severe obesity, and morbid obesity with hypogonadism. This gene has also been linked to type 2 diabetes mellitus development. [provided by RefSeq].

LEP Antibody (N-term) - References

Romero, R., et al. Am. J. Obstet. Gynecol. 203 (4), 361 (2010) :
Qin, J., et al. J. Hum. Genet. 55(10):704-706(2010)
Friedlander, Y., et al. Ann. Hum. Genet. 74(5):387-398(2010)
Sarzynski, M.A., et al. Int J Obes (Lond) (2010) In press :
Iciek, R., et al. Ginekol. Pol. 81(8):571-577(2010)