

**KCNC4 Antibody (C-term)**  
**Affinity Purified Rabbit Polyclonal Antibody (Pab)**  
**Catalog # AP16672b****Specification**

---

**KCNC4 Antibody (C-term) - Product Information**

Application	WB,E
Primary Accession	<a href="#">Q03721</a>
Other Accession	<a href="#">NP_004969.2</a>
Reactivity	Human
Host	Rabbit
Clonality	Polyclonal
Isotype	Rabbit IgG
Calculated MW	69767
Antigen Region	518-546

**KCNC4 Antibody (C-term) - Additional Information****Gene ID** 3749**Other Names**

Potassium voltage-gated channel subfamily C member 4, KSHIIIC, Voltage-gated potassium channel subunit Kv34, KCNC4

**Target/Specificity**

This KCNC4 antibody is generated from rabbits immunized with a KLH conjugated synthetic peptide between 518-546 amino acids from the C-terminal region of human KCNC4.

**Dilution**

WB~~1:1000

**Format**

Purified polyclonal antibody supplied in PBS with 0.09% (W/V) sodium azide. This antibody is purified through a protein A column, followed by peptide affinity purification.

**Storage**

Maintain refrigerated at 2-8°C for up to 2 weeks. For long term storage store at -20°C in small aliquots to prevent freeze-thaw cycles.

**Precautions**

KCNC4 Antibody (C-term) is for research use only and not for use in diagnostic or therapeutic procedures.

**KCNC4 Antibody (C-term) - Protein Information****Name** KCNC4 ([HGNC:6236](#))**Function** This protein mediates the voltage-dependent potassium ion permeability of excitable

membranes. Assuming opened or closed conformations in response to the voltage difference across the membrane, the protein forms a potassium-selective channel through which potassium ions may pass in accordance with their electrochemical gradient.

#### Cellular Location

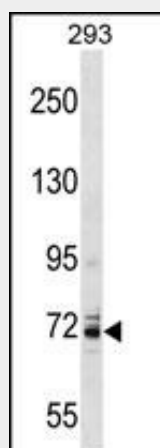
Membrane; Multi-pass membrane protein.

#### KCNC4 Antibody (C-term) - Protocols

Provided below are standard protocols that you may find useful for product applications.

- [Western Blot](#)
- [Blocking Peptides](#)
- [Dot Blot](#)
- [Immunohistochemistry](#)
- [Immunofluorescence](#)
- [Immunoprecipitation](#)
- [Flow Cytometry](#)
- [Cell Culture](#)

#### KCNC4 Antibody (C-term) - Images



KCNC4 Antibody (C-term) (Cat. #AP16672b) western blot analysis in 293 cell line lysates (35ug/lane). This demonstrates the KCNC4 antibody detected the KCNC4 protein (arrow).

#### KCNC4 Antibody (C-term) - Background

The Shaker gene family of *Drosophila* encodes components of voltage-gated potassium channels and is comprised of four subfamilies. Based on sequence similarity, this gene is similar to the Shaw subfamily. The protein encoded by this gene belongs to the delayed rectifier class of channel proteins and is an integral membrane protein that mediates the voltage-dependent potassium ion permeability of excitable membranes. It generates atypical voltage-dependent transient current that may be important for neuronal excitability. Multiple transcript variants have been found for this gene.

#### KCNC4 Antibody (C-term) - References

Mosing, M.A., et al. Twin Res Hum Genet 13(4):398-403(2010)  
Menendez, S.T., et al. J. Pathol. 221(4):402-410(2010)  
Leblanc, N. Cardiovasc. Res. 86(3):351-352(2010)  
Miguel-Velado, E., et al. Cardiovasc. Res. 86(3):383-391(2010)  
Abbott, G.W., et al. FASEB J. 20(2):293-301(2006)