

ATP5G1 Antibody (Center)
Affinity Purified Rabbit Polyclonal Antibody (Pab)
Catalog # AP16683c**Specification**

ATP5G1 Antibody (Center) - Product Information

Application	WB,E
Primary Accession	P05496
Other Accession	NP_001002027.1 , NP_005166.1
Reactivity	Human, Mouse
Host	Rabbit
Clonality	Polyclonal
Isotype	Rabbit IgG
Calculated MW	14277
Antigen Region	27-56

ATP5G1 Antibody (Center) - Additional Information**Gene ID** 516**Other Names**

ATP synthase F(0) complex subunit C1, mitochondrial, ATP synthase lipid-binding protein, ATP synthase proteolipid P1, ATP synthase proton-transporting mitochondrial F(0) complex subunit C1, ATPase protein 9, ATPase subunit c, ATP5G1

Target/Specificity

This ATP5G1 antibody is generated from rabbits immunized with a KLH conjugated synthetic peptide between 27-56 amino acids from the Central region of human ATP5G1.

Dilution

WB~~1:1000

Format

Purified polyclonal antibody supplied in PBS with 0.09% (W/V) sodium azide. This antibody is purified through a protein A column, followed by peptide affinity purification.

Storage

Maintain refrigerated at 2-8°C for up to 2 weeks. For long term storage store at -20°C in small aliquots to prevent freeze-thaw cycles.

Precautions

ATP5G1 Antibody (Center) is for research use only and not for use in diagnostic or therapeutic procedures.

ATP5G1 Antibody (Center) - Protein Information**Name** ATP5MC1 ([HGNC:841](#))

Function Mitochondrial membrane ATP synthase (F(1)F(0) ATP synthase or Complex V) produces ATP from ADP in the presence of a proton gradient across the membrane which is generated by electron transport complexes of the respiratory chain. F-type ATPases consist of two structural domains, F(1) - containing the extramembraneous catalytic core and F(0) - containing the membrane proton channel, linked together by a central stalk and a peripheral stalk. During catalysis, ATP synthesis in the catalytic domain of F(1) is coupled via a rotary mechanism of the central stalk subunits to proton translocation. Part of the complex F(0) domain. A homomeric c-ring of probably 10 subunits is part of the complex rotary element.

Cellular Location

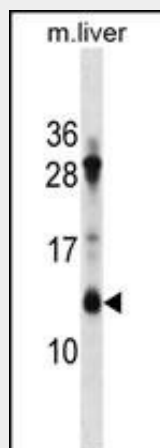
Mitochondrion membrane; Multi-pass membrane protein

ATP5G1 Antibody (Center) - Protocols

Provided below are standard protocols that you may find useful for product applications.

- [Western Blot](#)
- [Blocking Peptides](#)
- [Dot Blot](#)
- [Immunohistochemistry](#)
- [Immunofluorescence](#)
- [Immunoprecipitation](#)
- [Flow Cytometry](#)
- [Cell Culture](#)

ATP5G1 Antibody (Center) - Images



ATP5G1 Antibody (Center) (Cat. #AP16683c) western blot analysis in mouse liver tissue lysates (35ug/lane). This demonstrates the ATP5G1 antibody detected the ATP5G1 protein (arrow).

ATP5G1 Antibody (Center) - Background

This gene encodes a subunit of mitochondrial ATP synthase. Mitochondrial ATP synthase catalyzes ATP synthesis, utilizing an electrochemical gradient of protons across the inner membrane during oxidative phosphorylation. ATP synthase is composed of two linked multi-subunit complexes: the soluble catalytic core, F1, and the membrane-spanning component, Fo, comprising the proton channel. The catalytic portion of mitochondrial ATP synthase consists of 5 different subunits (alpha, beta, gamma, delta, and epsilon).

assembled with a stoichiometry of 3 alpha, 3 beta, and a single representative of the other 3. The proton channel seems to have nine subunits (a, b, c, d, e, f, g, F6 and 8). This gene is one of three genes that encode subunit c of the proton channel. Each of the three genes have distinct mitochondrial import sequences but encode the identical mature protein. Alternatively spliced transcript variants encoding the same protein have been identified.

ATP5G1 Antibody (Center) - References

Vives-Bauza, C., et al. Mol. Biol. Cell 21(1):131-139(2010)
Wang, H.L., et al. Cytogenet. Genome Res. 109 (4), 533 (2005) :
Cross, R.L. Nature 427(6973):407-408(2004)
Simpson, J.C., et al. EMBO Rep. 1(3):287-292(2000)
Wang, H., et al. Nature 396(6708):279-282(1998)