

LPAR4 Antibody (Center)
Affinity Purified Rabbit Polyclonal Antibody (Pab)
Catalog # AP16685c**Specification**

LPAR4 Antibody (Center) - Product Information

Application	WB,E
Primary Accession	Q99677
Other Accession	Q8BLG2 , NP_005287.1
Reactivity	Human
Predicted	Mouse
Host	Rabbit
Clonality	Polyclonal
Isotype	Rabbit IgG
Calculated MW	41895
Antigen Region	127-156

LPAR4 Antibody (Center) - Additional Information**Gene ID** 2846**Other Names**

Lysophosphatidic acid receptor 4, LPA receptor 4, LPA-4, G-protein coupled receptor 23, P2Y purinoceptor 9, P2Y9, P2Y5-like receptor, Purinergic receptor 9, LPAR4, GPR23, LPA4, P2RY9

Target/Specificity

This LPAR4 antibody is generated from rabbits immunized with a KLH conjugated synthetic peptide between 127-156 amino acids from the Central region of human LPAR4.

Dilution

WB~~1:1000

Format

Purified polyclonal antibody supplied in PBS with 0.09% (W/V) sodium azide. This antibody is purified through a protein A column, followed by peptide affinity purification.

Storage

Maintain refrigerated at 2-8°C for up to 2 weeks. For long term storage store at -20°C in small aliquots to prevent freeze-thaw cycles.

Precautions

LPAR4 Antibody (Center) is for research use only and not for use in diagnostic or therapeutic procedures.

LPAR4 Antibody (Center) - Protein Information**Name** LPAR4

Synonyms GPR23, LPA4, P2RY9

Function Receptor for lysophosphatidic acid (LPA), a mediator of diverse cellular activities. Transduces a signal by increasing the intracellular calcium ions and by stimulating adenylyl cyclase activity. The rank order of potency for agonists of this receptor is 1- oleoyl- > 1-stearoyl- > 1-palmitoyl- > 1-myristoyl- > 1-alkyl- > 1- alkenyl-LPA.

Cellular Location

Cell membrane; Multi-pass membrane protein.

Tissue Location

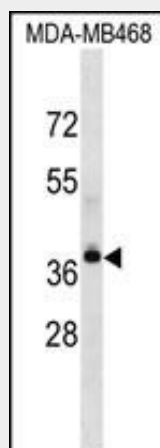
High expression in ovary. Not detected in the brain regions thalamus, putamen, caudate, frontal cortex, pons, hypothalamus and hippocampus.

LPAR4 Antibody (Center) - Protocols

Provided below are standard protocols that you may find useful for product applications.

- [Western Blot](#)
- [Blocking Peptides](#)
- [Dot Blot](#)
- [Immunohistochemistry](#)
- [Immunofluorescence](#)
- [Immunoprecipitation](#)
- [Flow Cytometry](#)
- [Cell Culture](#)

LPAR4 Antibody (Center) - Images



LPAR4 Antibody (Center) (Cat. #AP16685c) western blot analysis in MDA-MB468 cell line lysates (35ug/lane). This demonstrates the LPAR4 antibody detected the LPAR4 protein (arrow).

LPAR4 Antibody (Center) - Background

This gene encodes a member of the lysophosphatidic acid receptor family. It may also be related to the P2Y receptors, a family of receptors that bind purine and pyrimidine nucleotides and are coupled to G proteins. The encoded protein may play a role in monocytic differentiation.

LPAR4 Antibody (Center) - References

Liu, Y.B., et al. J. Cell. Biochem. 109(4):794-800(2010)
Kumar, S.A., et al. Leuk. Lymphoma 50(12):2038-2048(2009)
Luttrell, L.M. Mol. Biotechnol. 39(3):239-264(2008)
Dowal, L., et al. J. Biol. Chem. 281(33):23999-24014(2006)
Noguchi, K., et al. J. Biol. Chem. 278(28):25600-25606(2003)