

KCTD6 Antibody (Center)
Affinity Purified Rabbit Polyclonal Antibody (Pab)
Catalog # AP16702C**Specification**

KCTD6 Antibody (Center) - Product Information

Application	WB,E
Primary Accession	Q8NC69
Other Accession	Q8BNL5 , Q6DG99 , NP_001121686.1 , NP_699162.3
Reactivity	Human, Mouse
Predicted	Zebrafish
Host	Rabbit
Clonality	Polyclonal
Isotype	Rabbit IgG
Calculated MW	27610
Antigen Region	75-103

KCTD6 Antibody (Center) - Additional Information**Gene ID** 200845**Other Names**

BTB/POZ domain-containing protein KCTD6, KCTD6

Target/Specificity

This KCTD6 antibody is generated from rabbits immunized with a KLH conjugated synthetic peptide between 75-103 amino acids from the Central region of human KCTD6.

Dilution

WB~~1:1000

Format

Purified polyclonal antibody supplied in PBS with 0.09% (W/V) sodium azide. This antibody is purified through a protein A column, followed by peptide affinity purification.

Storage

Maintain refrigerated at 2-8°C for up to 2 weeks. For long term storage store at -20°C in small aliquots to prevent freeze-thaw cycles.

Precautions

KCTD6 Antibody (Center) is for research use only and not for use in diagnostic or therapeutic procedures.

KCTD6 Antibody (Center) - Protein Information**Name** KCTD6

Function Probable substrate-specific adapter of a BCR (BTB-CUL3-RBX1) E3 ubiquitin-protein ligase complex mediating the ubiquitination and subsequent proteasomal degradation of target proteins. Promotes the ubiquitination of HDAC1; the function seems to depend on KCTD11:KCTD6 oligomerization. Can function as antagonist of the Hedgehog pathway by affecting the nuclear transfer of transcription factor GLI1; the function probably occurs via HDAC1 down-regulation, keeping GLI1 acetylated and inactive. Inhibits cell growth and tumorigenicity of medulloblastoma (MDB) (PubMed:[21472142](#)). Involved in regulating protein levels of ANK1 isoform Mu17 probably implicating CUL3-dependent proteasomal degradation (PubMed:[22573887](#)).

Cellular Location

Cytoplasm, myofibril, sarcomere, M line. Note=Colocalizes with ANK1 isoform Mu17 at the M line in differentiated skeletal muscle cells and heart

Tissue Location

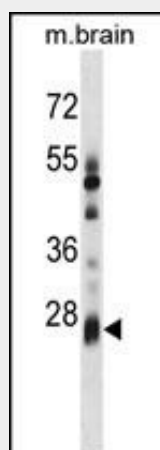
Highly expressed in cerebellum and brain. Expression is down-regulated in medulloblastoma

KCTD6 Antibody (Center) - Protocols

Provided below are standard protocols that you may find useful for product applications.

- [Western Blot](#)
- [Blocking Peptides](#)
- [Dot Blot](#)
- [Immunohistochemistry](#)
- [Immunofluorescence](#)
- [Immunoprecipitation](#)
- [Flow Cytometry](#)
- [Cell Culture](#)

KCTD6 Antibody (Center) - Images



KCTD6 Antibody (Center) (Cat. #AP16702c) western blot analysis in mouse brain tissue lysates (35ug/lane). This demonstrates the KCTD6 antibody detected the KCTD6 protein (arrow).

KCTD6 Antibody (Center) - Background

KCTD6 is a domain of a potassium channel.

KCTD6 Antibody (Center) - References

Lamesch, P., et al. Genomics 89(3):307-315(2007)