

CLCN2 Antibody (N-term)
Affinity Purified Rabbit Polyclonal Antibody (Pab)
Catalog # AP16730a**Specification**

CLCN2 Antibody (N-term) - Product Information

| | |
|-------------------|--|
| Application | WB,E |
| Primary Accession | P51788 |
| Other Accession | P35525 , P51789 , NP_001164559.1 |
| Reactivity | Human, Mouse |
| Predicted | Rabbit, Rat |
| Host | Rabbit |
| Clonality | Polyclonal |
| Isotype | Rabbit IgG |
| Calculated MW | 98535 |
| Antigen Region | 209-237 |

CLCN2 Antibody (N-term) - Additional Information**Gene ID** 1181**Other Names**

Chloride channel protein 2, CIC-2, CLCN2

Target/Specificity

This CLCN2 antibody is generated from rabbits immunized with a KLH conjugated synthetic peptide between 209-237 amino acids from the N-terminal region of human CLCN2.

Dilution

WB~~1:1000

Format

Purified polyclonal antibody supplied in PBS with 0.09% (W/V) sodium azide. This antibody is purified through a protein A column, followed by peptide affinity purification.

Storage

Maintain refrigerated at 2-8°C for up to 2 weeks. For long term storage store at -20°C in small aliquots to prevent freeze-thaw cycles.

Precautions

CLCN2 Antibody (N-term) is for research use only and not for use in diagnostic or therapeutic procedures.

CLCN2 Antibody (N-term) - Protein Information**Name** CLCN2**Function** Voltage-gated chloride channel. Chloride channels have several functions including the

regulation of cell volume, membrane potential stabilization, signal transduction and transepithelial transport. Involved in the regulation of aldosterone production. The opening of CLCN2 channels at hyperpolarized membrane potentials in the glomerulosa causes cell membrane depolarization, activation of voltage-gated Ca^{2+} channels and increased expression of aldosterone synthase, the rate-limiting enzyme for aldosterone biosynthesis (PubMed:[29403011](#), PubMed:[29403012](#)).

Cellular Location

Cell membrane; Multi-pass membrane protein

Tissue Location

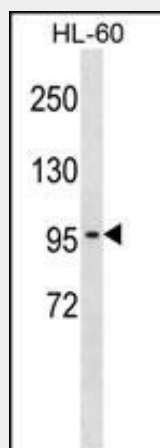
Ubiquitously expressed. Moderately expressed in aortic and coronary vascular smooth muscle cells and expressed at a low level in aortic endothelial cells. Expressed in the adrenal gland, predominantly in the zona glomerulosa (PubMed:29403011)

CLCN2 Antibody (N-term) - Protocols

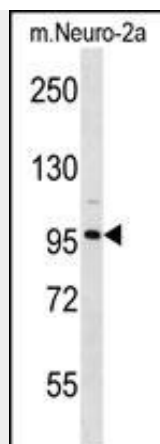
Provided below are standard protocols that you may find useful for product applications.

- [Western Blot](#)
- [Blocking Peptides](#)
- [Dot Blot](#)
- [Immunohistochemistry](#)
- [Immunofluorescence](#)
- [Immunoprecipitation](#)
- [Flow Cytometry](#)
- [Cell Culture](#)

CLCN2 Antibody (N-term) - Images



CLCN2 Antibody (N-term) (Cat. #AP16730a) western blot analysis in HL-60 cell line lysates (35ug/lane). This demonstrates the CLCN2 antibody detected the CLCN2 protein (arrow).



CLCN2 Antibody (N-term) (Cat. #AP16730a) western blot analysis in mouse Neuro-2a cell line lysates (35ug/lane). This demonstrates the CLCN2 antibody detected the CLCN2 protein (arrow).

CLCN2 Antibody (N-term) - Background

The transmembrane protein encoded by this gene is a voltage-gated chloride channel that maintains chloride ion homeostasis in various cells. Defects in this gene may be a cause of certain epilepsies. Four transcript variants encoding different isoforms have been found for this gene.

CLCN2 Antibody (N-term) - References

Scheper, G.C., et al. Genet Test Mol Biomarkers 14(2):255-257(2010)
Cornejo, I., et al. J. Cell. Physiol. 221(3):650-657(2009)
Thompson, C.H., et al. J. Biol. Chem. 284(38):26051-26062(2009)
Kleefuss-Lie, A., et al. Nat. Genet. 41(9):954-955(2009)
Klaus, F., et al. Biochem. Biophys. Res. Commun. 381(3):407-411(2009)