

LCN8 Antibody (C-term)
Affinity Purified Rabbit Polyclonal Antibody (Pab)
Catalog # AP16750b

Specification

LCN8 Antibody (C-term) - Product Information

| | |
|-------------------|-----------------------------|
| Application | WB,E |
| Primary Accession | Q6JVE9 |
| Other Accession | NP_848564.2 |
| Reactivity | Human |
| Host | Rabbit |
| Clonality | Polyclonal |
| Isotype | Rabbit IgG |
| Calculated MW | 19080 |
| Antigen Region | 111-140 |

LCN8 Antibody (C-term) - Additional Information

Gene ID 138307

Other Names

Epididymal-specific lipocalin-8, LCN8, LCN5

Target/Specificity

This LCN8 antibody is generated from rabbits immunized with a KLH conjugated synthetic peptide between 111-140 amino acids from the C-terminal region of human LCN8.

Dilution

WB~~1:1000

Format

Purified polyclonal antibody supplied in PBS with 0.09% (W/V) sodium azide. This antibody is purified through a protein A column, followed by peptide affinity purification.

Storage

Maintain refrigerated at 2-8°C for up to 2 weeks. For long term storage store at -20°C in small aliquots to prevent freeze-thaw cycles.

Precautions

LCN8 Antibody (C-term) is for research use only and not for use in diagnostic or therapeutic procedures.

LCN8 Antibody (C-term) - Protein Information

Name LCN8

Synonyms LCN5

Function May play a role in male fertility. May act as a retinoid carrier protein within the epididymis.

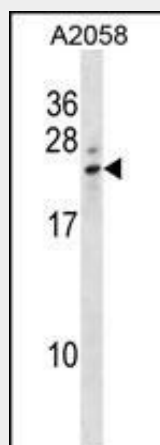
Cellular Location
Secreted.

LCN8 Antibody (C-term) - Protocols

Provided below are standard protocols that you may find useful for product applications.

- [Western Blot](#)
- [Blocking Peptides](#)
- [Dot Blot](#)
- [Immunohistochemistry](#)
- [Immunofluorescence](#)
- [Immunoprecipitation](#)
- [Flow Cytometry](#)
- [Cell Culture](#)

LCN8 Antibody (C-term) - Images



LCN8 Antibody (C-term) (Cat. #AP16750b) western blot analysis in A2058 cell line lysates (35ug/lane). This demonstrates the LCN8 antibody detected the LCN8 protein (arrow).

LCN8 Antibody (C-term) - Background

Members of the lipocalin family, such as LCN8, have a common structure consisting of an 8-stranded antiparallel beta-barrel that forms a cup-shaped ligand-binding pocket or calyx. Lipocalins generally bind small hydrophobic ligands and transport them to specific cells (Suzuki et al., 2004 [PubMed 15363845]).

LCN8 Antibody (C-term) - References

Suzuki, K., et al. Gene 339, 49-59 (2004) :
Humphray, S.J., et al. Nature 429(6990):369-374(2004)