

**RCN1 Antibody (C-term)**  
**Affinity Purified Rabbit Polyclonal Antibody (Pab)**  
**Catalog # AP16754B****Specification**

---

**RCN1 Antibody (C-term) - Product Information**

Application	WB,E
Primary Accession	<a href="#">Q15293</a>
Other Accession	<a href="#">Q05186</a> , <a href="#">NP_002892.1</a>
Reactivity	Human
Predicted	Mouse
Host	Rabbit
Clonality	Polyclonal
Isotype	Rabbit IgG
Calculated MW	38890
Antigen Region	305-331

**RCN1 Antibody (C-term) - Additional Information****Gene ID** 5954**Other Names**

Reticulocalbin-1, RCN1, RCN

**Target/Specificity**

This RCN1 antibody is generated from rabbits immunized with a KLH conjugated synthetic peptide between 305-331 amino acids from the C-terminal region of human RCN1.

**Dilution**

WB~~1:1000

**Format**

Purified polyclonal antibody supplied in PBS with 0.09% (W/V) sodium azide. This antibody is purified through a protein A column, followed by peptide affinity purification.

**Storage**

Maintain refrigerated at 2-8°C for up to 2 weeks. For long term storage store at -20°C in small aliquots to prevent freeze-thaw cycles.

**Precautions**

RCN1 Antibody (C-term) is for research use only and not for use in diagnostic or therapeutic procedures.

**RCN1 Antibody (C-term) - Protein Information****Name** RCN1**Synonyms** RCN

**Function** May regulate calcium-dependent activities in the endoplasmic reticulum lumen or post-ER compartment.

**Cellular Location**

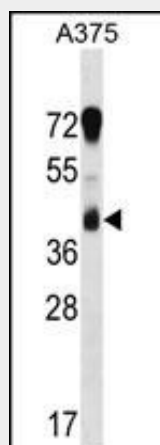
Endoplasmic reticulum lumen.

**RCN1 Antibody (C-term) - Protocols**

Provided below are standard protocols that you may find useful for product applications.

- [Western Blot](#)
- [Blocking Peptides](#)
- [Dot Blot](#)
- [Immunohistochemistry](#)
- [Immunofluorescence](#)
- [Immunoprecipitation](#)
- [Flow Cytometry](#)
- [Cell Culture](#)

**RCN1 Antibody (C-term) - Images**



RCN1 Antibody (C-term) (Cat. #AP16754b) western blot analysis in A375 cell line lysates (35ug/lane). This demonstrates the RCN1 antibody detected the RCN1 protein (arrow).

**RCN1 Antibody (C-term) - Background**

Reticulocalbin 1 is a calcium-binding protein located in the lumen of the ER. The protein contains six conserved regions with similarity to a high affinity  $\text{Ca}^{+2}$ -binding motif, the EF-hand. High conservation of amino acid residues outside of these motifs, in comparison to mouse reticulocalbin, is consistent with a possible biochemical function besides that of calcium binding. In human endothelial and prostate cancer cell lines this protein localizes to the plasma membrane.

**RCN1 Antibody (C-term) - References**

Favor, J., et al. Genetics 182(4):1077-1088(2009)  
Hansen, G.A., et al. Mol. Cell. Biochem. 320 (1-2), 25-33 (2009) :  
Cooper, C.R., et al. J. Cell. Biochem. 104(6):2298-2309(2008)

Lim, J., et al. Cell 125(4):801-814(2006)

Taylor, T.D., et al. Nature 440(7083):497-500(2006)