

**TRPV5 Antibody (C-term)**  
**Affinity Purified Rabbit Polyclonal Antibody (Pab)**  
**Catalog # AP16764B****Specification**

---

**TRPV5 Antibody (C-term) - Product Information**

Application	WB,E
Primary Accession	<a href="#">O9NOA5</a>
Other Accession	<a href="#">NP_062815.2</a>
Reactivity	Human
Host	Rabbit
Clonality	Polyclonal
Isotype	Rabbit IgG
Calculated MW	82562
Antigen Region	634-663

**TRPV5 Antibody (C-term) - Additional Information****Gene ID** 56302**Other Names**

Transient receptor potential cation channel subfamily V member 5, TrpV5, Calcium transport protein 2, CaT2, Epithelial calcium channel 1, ECaC, ECaC1, Osm-9-like TRP channel 3, OTRPC3, TRPV5, ECAC1

**Target/Specificity**

This TRPV5 antibody is generated from rabbits immunized with a KLH conjugated synthetic peptide between 634-663 amino acids from the C-terminal region of human TRPV5.

**Dilution**

WB~~1:1000

**Format**

Purified polyclonal antibody supplied in PBS with 0.09% (W/V) sodium azide. This antibody is purified through a protein A column, followed by peptide affinity purification.

**Storage**

Maintain refrigerated at 2-8°C for up to 2 weeks. For long term storage store at -20°C in small aliquots to prevent freeze-thaw cycles.

**Precautions**

TRPV5 Antibody (C-term) is for research use only and not for use in diagnostic or therapeutic procedures.

**TRPV5 Antibody (C-term) - Protein Information****Name** TRPV5

**Synonyms** ECAC1 {ECO:0000303|PubMed:10945469}

**Function** Constitutively active calcium selective cation channel thought to be involved in Ca(2+) reabsorption in kidney and intestine (PubMed:[11549322](#), PubMed:[18768590](#)). Required for normal Ca(2+) reabsorption in the kidney distal convoluted tubules (By similarity). The channel is activated by low internal calcium level and the current exhibits an inward rectification (PubMed:[11549322](#), PubMed:[18768590](#)). A Ca(2+)-dependent feedback regulation includes fast channel inactivation and slow current decay (By similarity). Heteromeric assembly with TRPV6 seems to modify channel properties. TRPV5-TRPV6 heteromultimeric concatemers exhibit voltage-dependent gating (By similarity).

#### **Cellular Location**

Apical cell membrane; Multi-pass membrane protein. Note=Colocalized with S100A10 and ANAX2 along the apical domain of kidney distal tubular cells (By similarity) The expression of the glycosylated form in the cell membrane is increased in the presence of WNK3 (PubMed:[18768590](#)) {ECO:0000250|UniProtKB:P69744, ECO:0000269|PubMed:[18768590](#)}

#### **Tissue Location**

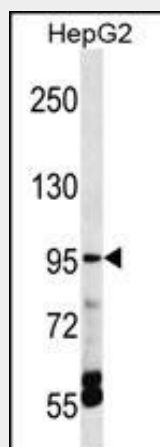
Expressed at high levels in kidney, small intestine and pancreas, and at lower levels in testis, prostate, placenta, brain, colon and rectum.

### **TRPV5 Antibody (C-term) - Protocols**

Provided below are standard protocols that you may find useful for product applications.

- [Western Blot](#)
- [Blocking Peptides](#)
- [Dot Blot](#)
- [Immunohistochemistry](#)
- [Immunofluorescence](#)
- [Immunoprecipitation](#)
- [Flow Cytometry](#)
- [Cell Culture](#)

### **TRPV5 Antibody (C-term) - Images**



TRPV5 Antibody (C-term) (Cat. #AP16764b) western blot analysis in HepG2 cell line lysates (35ug/lane). This demonstrates the TRPV5 antibody detected the TRPV5 protein (arrow).

### **TRPV5 Antibody (C-term) - Background**

This gene is a member of the transient receptor family and the TrpV subfamily. The calcium-selective channel encoded by this gene has 6 transmembrane-spanning domains, multiple potential phosphorylation sites, an N-linked glycosylation site, and 5 ANK repeats. This protein forms homotetramers or heterotetramers and is activated by a low internal calcium level.

#### **TRPV5 Antibody (C-term) - References**

Chamoux, E., et al. J. Biol. Chem. 285(33):25354-25362(2010)  
Kennedy, B.G., et al. Mol. Vis. 16, 665-675 (2010) :  
Yerges, L.M., et al. J. Bone Miner. Res. 24(12):2039-2049(2009)  
de Groot, T., et al. J. Am. Soc. Nephrol. 20(8):1693-1704(2009)  
Semenova, S.B., et al. Am. J. Physiol., Cell Physiol. 296 (5), C1098-C1104 (2009) :