

PAIP2 Antibody (N-term)
Affinity Purified Rabbit Polyclonal Antibody (Pab)
Catalog # AP16769a

Specification

PAIP2 Antibody (N-term) - Product Information

Application	WB,E
Primary Accession	Q9BPZ3
Other Accession	Q5ZJS6 , Q3ZC67 , NP_057564.3 , NP_001028284.1
Reactivity	Human
Predicted	Bovine, Chicken
Host	Rabbit
Clonality	Polyclonal
Isotype	Rabbit IgG
Calculated MW	14984
Antigen Region	7-34

PAIP2 Antibody (N-term) - Additional Information

Gene ID 51247

Other Names

Polyadenylate-binding protein-interacting protein 2, PABP-interacting protein 2, PAIP-2,
Poly(A)-binding protein-interacting protein 2, PAIP2, PAIP2A

Target/Specificity

This PAIP2 antibody is generated from rabbits immunized with a KLH conjugated synthetic peptide between 7-34 amino acids from the N-terminal region of human PAIP2.

Dilution

WB~~1:1000

Format

Purified polyclonal antibody supplied in PBS with 0.09% (W/V) sodium azide. This antibody is purified through a protein A column, followed by peptide affinity purification.

Storage

Maintain refrigerated at 2-8°C for up to 2 weeks. For long term storage store at -20°C in small aliquots to prevent freeze-thaw cycles.

Precautions

PAIP2 Antibody (N-term) is for research use only and not for use in diagnostic or therapeutic procedures.

PAIP2 Antibody (N-term) - Protein Information

Name PAIP2

Synonyms PAIP2A

Function Acts as a repressor in the regulation of translation initiation of poly(A)-containing mRNAs. Its inhibitory activity on translation is mediated via its action on PABPC1. Displaces the interaction of PABPC1 with poly(A) RNA and competes with PAIP1 for binding to PABPC1. Its association with PABPC1 results in disruption of the cytoplasmic poly(A) RNP structure organization.

Cellular Location

Cytoplasm.

Tissue Location

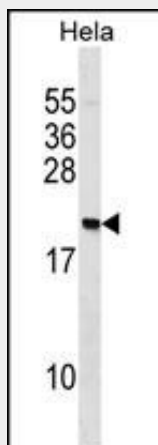
Expressed at highest level in testis, but also abundant in brain, cervix, lung, ovary, placenta, adipose tissue, thymus and thyroid.

PAIP2 Antibody (N-term) - Protocols

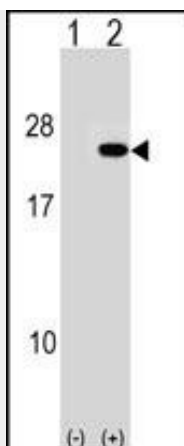
Provided below are standard protocols that you may find useful for product applications.

- [Western Blot](#)
- [Blocking Peptides](#)
- [Dot Blot](#)
- [Immunohistochemistry](#)
- [Immunofluorescence](#)
- [Immunoprecipitation](#)
- [Flow Cytometry](#)
- [Cell Culture](#)

PAIP2 Antibody (N-term) - Images



PAIP2 Antibody (N-term) (Cat. #AP16769a) western blot analysis in HeLa cell line lysates (35ug/lane). This demonstrates the PAIP2 antibody detected the PAIP2 protein (arrow).



Western blot analysis of PAIP2 (arrow) using rabbit polyclonal PAIP2 Antibody (N-term) (Cat. #AP16769a). 293 cell lysates (2 ug/lane) either nontransfected (Lane 1) or transiently transfected (Lane 2) with the PAIP2 gene.

PAIP2 Antibody (N-term) - Background

PAIP2 acts as a repressor in the regulation of translation initiation of poly(A)-containing mRNAs. Its inhibitory activity on translation is mediated via its action on PABPC1. Displaces the interaction of PABPC1 with poly(A) RNA and competes with PAIP1 for binding to PABPC1. Its association with PABPC1 results in disruption of the cytoplasmic poly(A) RNP structure organization.

PAIP2 Antibody (N-term) - References

Graubert, T.A., et al. PLoS ONE 4 (2), E4583 (2009) :
Berlanga, J.J., et al. RNA 12(8):1556-1568(2006)
Yoshida, M., et al. EMBO J. 25(9):1934-1944(2006)
Onesto, C., et al. J. Biol. Chem. 279(33):34217-34226(2004)
Guyon, F., et al. Biochem. J. 375 (PT 1), 167-174 (2003) :