

**ICA1 Antibody (N-term)**  
**Affinity Purified Rabbit Polyclonal Antibody (Pab)**  
**Catalog # AP16802A****Specification**

---

**ICA1 Antibody (N-term) - Product Information**

Application	WB,E
Primary Accession	<a href="#">Q05084</a>
Other Accession	<a href="#">Q63054</a> , <a href="#">P97411</a> , <a href="#">NP_071682.1</a> , <a href="#">NP_001129492.1</a>
Reactivity	Human
Predicted	Mouse, Rat
Host	Rabbit
Clonality	Polyclonal
Isotype	Rabbit IgG
Calculated MW	54645
Antigen Region	84-111

**ICA1 Antibody (N-term) - Additional Information****Gene ID** 3382**Other Names**

Islet cell autoantigen 1, 69 kDa islet cell autoantigen, ICA69, Islet cell autoantigen p69, ICAp69, p69, ICA1

**Target/Specificity**

This ICA1 antibody is generated from rabbits immunized with a KLH conjugated synthetic peptide between 84-111 amino acids from the N-terminal region of human ICA1.

**Dilution**

WB~~1:1000

**Format**

Purified polyclonal antibody supplied in PBS with 0.09% (W/V) sodium azide. This antibody is purified through a protein A column, followed by peptide affinity purification.

**Storage**

Maintain refrigerated at 2-8°C for up to 2 weeks. For long term storage store at -20°C in small aliquots to prevent freeze-thaw cycles.

**Precautions**

ICA1 Antibody (N-term) is for research use only and not for use in diagnostic or therapeutic procedures.

**ICA1 Antibody (N-term) - Protein Information****Name** ICA1

**Function** May play a role in neurotransmitter secretion.

**Cellular Location**

Cytoplasm, cytosol. Golgi apparatus membrane; Peripheral membrane protein. Cytoplasmic vesicle, secretory vesicle membrane; Peripheral membrane protein. Cytoplasmic vesicle, secretory vesicle, synaptic vesicle membrane; Peripheral membrane protein. Note=Predominantly cytosolic. Also exists as a membrane-bound form which has been found associated with synaptic vesicles and also with the Golgi complex and immature secretory granules

**Tissue Location**

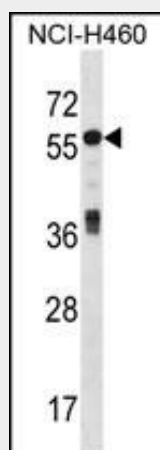
Expressed abundantly in pancreas, heart and brain with low levels of expression in lung, kidney, liver and thyroid

**ICA1 Antibody (N-term) - Protocols**

Provided below are standard protocols that you may find useful for product applications.

- [Western Blot](#)
- [Blocking Peptides](#)
- [Dot Blot](#)
- [Immunohistochemistry](#)
- [Immunofluorescence](#)
- [Immunoprecipitation](#)
- [Flow Cytometry](#)
- [Cell Culture](#)

**ICA1 Antibody (N-term) - Images**



ICA1 Antibody (N-term) (Cat. #AP16802a) western blot analysis in NCI-H460 cell line lysates (35ug/lane). This demonstrates the ICA1 antibody detected the ICA1 protein (arrow).

**ICA1 Antibody (N-term) - Background**

This gene encodes a protein with an arfaptin homology domain that is found both in the cytosol and as membrane-bound form on the Golgi complex and immature secretory granules. This protein is believed to be an autoantigen in insulin-dependent diabetes mellitus and primary Sjogren's syndrome. Alternatively spliced variants which encode different protein isoforms have been described; however, not all variants have been fully characterized.

**ICA1 Antibody (N-term) - References**

Jin, Y., et al. Nat. Genet. 42(7):576-578(2010)  
Rose, J. Phd, et al. Mol. Med. (2010) In press :  
Buffa, L., et al. Eur. J. Cell Biol. 87(4):197-209(2008)  
Ewing, R.M., et al. Mol. Syst. Biol. 3, 89 (2007) :  
Gordon, T.P., et al. Lupus 13(6):483-484(2004)