

**GGPS1 Antibody (Center)**  
**Affinity Purified Rabbit Polyclonal Antibody (Pab)**  
**Catalog # AP16807c****Specification**

---

**GGPS1 Antibody (Center) - Product Information**

Application	WB,E
Primary Accession	<a href="#">O95749</a>
Other Accession	<a href="#">O6F596</a> , <a href="#">O9WTN0</a> , <a href="#">P56966</a> , <a href="#">NP_004828.1</a> , <a href="#">NP_001032354.1</a>
Reactivity	Human
Predicted	Bovine, Mouse, Rat
Host	Rabbit
Clonality	Polyclonal
Isotype	Rabbit IgG
Calculated MW	34871
Antigen Region	174-202

**GGPS1 Antibody (Center) - Additional Information****Gene ID** 9453**Other Names**

Geranylgeranyl pyrophosphate synthase, GGPP synthase, GGPPSase, 251-, (2E, 6E)-farnesyl diphosphate synthase, Dimethylallyltranstransferase, Farnesyl diphosphate synthase, Farnesyltranstransferase, Geranylgeranyl diphosphate synthase, Geranyltranstransferase, GGPS1

**Target/Specificity**

This GGPS1 antibody is generated from rabbits immunized with a KLH conjugated synthetic peptide between 174-202 amino acids from the Central region of human GGPS1.

**Dilution**

WB~~1:1000

**Format**

Purified polyclonal antibody supplied in PBS with 0.09% (W/V) sodium azide. This antibody is purified through a protein A column, followed by peptide affinity purification.

**Storage**

Maintain refrigerated at 2-8°C for up to 2 weeks. For long term storage store at -20°C in small aliquots to prevent freeze-thaw cycles.

**Precautions**

GGPS1 Antibody (Center) is for research use only and not for use in diagnostic or therapeutic procedures.

**GGPS1 Antibody (Center) - Protein Information**

**Name** GGPS1

**Function** Catalyzes the trans-addition of the three molecules of IPP onto DMAPP to form geranylgeranyl pyrophosphate, an important precursor of carotenoids and geranylated proteins.

**Cellular Location**

Cytoplasm. Cytoplasm, perinuclear region. Cytoplasm, myofibril, sarcomere, Z line

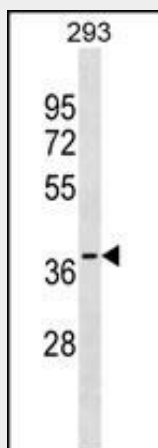
**Tissue Location**

Abundantly expressed in testis (PubMed:9741684, PubMed:10026212). Found in other tissues to a lower extent (PubMed:9741684, PubMed:10026212). Expressed in dermal fibroblast and skeletal muscle (PubMed:32403198).

**GGPS1 Antibody (Center) - Protocols**

Provided below are standard protocols that you may find useful for product applications.

- [Western Blot](#)
- [Blocking Peptides](#)
- [Dot Blot](#)
- [Immunohistochemistry](#)
- [Immunofluorescence](#)
- [Immunoprecipitation](#)
- [Flow Cytometry](#)
- [Cell Culture](#)

**GGPS1 Antibody (Center) - Images**

GGPS1 Antibody (Center) (Cat. #AP16807c) western blot analysis in 293 cell line lysates (35ug/lane). This demonstrates the GGPS1 antibody detected the GGPS1 protein (arrow).

**GGPS1 Antibody (Center) - Background**

This gene is a member of the prenyltransferase family and encodes a protein with geranylgeranyl diphosphate (GGPP) synthase activity. The enzyme catalyzes the synthesis of GGPP from farnesyl diphosphate and isopentenyl diphosphate. GGPP is an important molecule responsible for the C20-prenylation of proteins and for the regulation of a nuclear hormone receptor. Alternate transcriptional splice variants, both protein-coding and

non-protein-coding, have been found for this gene. [provided by RefSeq].

#### **GGPS1 Antibody (Center) - References**

Choi, H.J., et al. Yonsei Med. J. 51(2):231-238(2010)  
Raz, T., et al. Blood 110(6):2102-2109(2007)  
Miyagi, Y., et al. J. Biochem. 142(3):377-381(2007)  
Lamesch, P., et al. Genomics 89(3):307-315(2007)  
Zhao, Y., et al. Sci. China, C, Life Sci. 43(6):613-622(2000)