

SRPX Antibody (Center)
Affinity Purified Rabbit Polyclonal Antibody (Pab)
Catalog # AP16813c**Specification**

SRPX Antibody (Center) - Product Information

Application	WB,E
Primary Accession	P78539
Other Accession	NP_006298.1
Reactivity	Human
Host	Rabbit
Clonality	Polyclonal
Isotype	Rabbit IgG
Calculated MW	51572
Antigen Region	218-246

SRPX Antibody (Center) - Additional Information**Gene ID** 8406**Other Names**

Sushi repeat-containing protein SRPX, SRPX, ETX1

Target/Specificity

This SRPX antibody is generated from rabbits immunized with a KLH conjugated synthetic peptide between 218-246 amino acids from the Central region of human SRPX.

Dilution

WB~~1:1000

Format

Purified polyclonal antibody supplied in PBS with 0.09% (W/V) sodium azide. This antibody is purified through a protein A column, followed by peptide affinity purification.

Storage

Maintain refrigerated at 2-8°C for up to 2 weeks. For long term storage store at -20°C in small aliquots to prevent freeze-thaw cycles.

Precautions

SRPX Antibody (Center) is for research use only and not for use in diagnostic or therapeutic procedures.

SRPX Antibody (Center) - Protein Information**Name** SRPX**Synonyms** ETX1

Function May be involved in phagocytosis during disk shedding, cell adhesion to cells other than the pigment epithelium or signal transduction.

Cellular Location

Cell surface. Note=Possibly surface of photoreceptor cell

Tissue Location

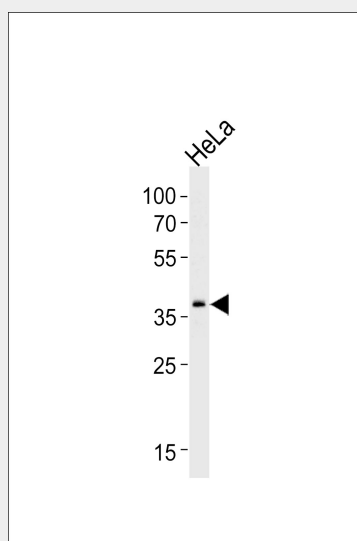
Detected in fibroblasts (at protein level) (PubMed:36213313). Retina and heart; less in placenta, pancreas, lung, liver, skeletal muscle, kidney and brain

SRPX Antibody (Center) - Protocols

Provided below are standard protocols that you may find useful for product applications.

- [Western Blot](#)
- [Blocking Peptides](#)
- [Dot Blot](#)
- [Immunohistochemistry](#)
- [Immunofluorescence](#)
- [Immunoprecipitation](#)
- [Flow Cytometry](#)
- [Cell Culture](#)

SRPX Antibody (Center) - Images



Western blot analysis of lysate from HeLa cell line, using SRPX Antibody (Center)(Cat. #AP16813c). AP16813c was diluted at 1:1000 at each lane. A goat anti-rabbit IgG H&L(HRP) at 1:5000 dilution was used as the secondary antibody. Lysate at 35ug per lane.

SRPX Antibody (Center) - Background

SRPX may be involved in phagocytosis during disk shedding, cell adhesion to cells other than the pigment epithelium or signal transduction.

SRPX Antibody (Center) - References

Burnicka-Turek, O., et al. BMC Cell Biol. 11, 28 (2010) :

Shimakage, M., et al. Oncol. Rep. 21(6):1367-1372(2009)
Iragavarapu, S., et al. Mol. Vis. 15, 2061-2067 (2009) :
Tambe, Y., et al. Oncogene 23(17):2977-2987(2004)
Kim, C.J., et al. Hum. Pathol. 34(7):654-657(2003)