

**RAVER1 Antibody (N-term)**  
**Affinity Purified Rabbit Polyclonal Antibody (Pab)**  
**Catalog # AP16815a****Specification**

---

**RAVER1 Antibody (N-term) - Product Information**

Application	WB,E
Primary Accession	<a href="#">Q8IY67</a>
Other Accession	<a href="#">Q5XI28</a> , <a href="#">Q9CW46</a> , <a href="#">NP_597709.2</a>
Reactivity	Human
Predicted	Mouse, Rat
Host	Rabbit
Clonality	Polyclonal
Isotype	Rabbit IgG
Calculated MW	63877
Antigen Region	56-83

**RAVER1 Antibody (N-term) - Additional Information****Gene ID** 125950**Other Names**

Ribonucleoprotein PTB-binding 1, Protein raver-1, RAVR1, KIAA1978

**Target/Specificity**

This RAVR1 antibody is generated from rabbits immunized with a KLH conjugated synthetic peptide between 56-83 amino acids from the N-terminal region of human RAVR1.

**Dilution**

WB~~1:1000

**Format**

Purified polyclonal antibody supplied in PBS with 0.09% (W/V) sodium azide. This antibody is purified through a protein A column, followed by peptide affinity purification.

**Storage**

Maintain refrigerated at 2-8°C for up to 2 weeks. For long term storage store at -20°C in small aliquots to prevent freeze-thaw cycles.

**Precautions**

RAVR1 Antibody (N-term) is for research use only and not for use in diagnostic or therapeutic procedures.

**RAVR1 Antibody (N-term) - Protein Information****Name** RAVR1**Synonyms** KIAA1978

**Function** Cooperates with PTBP1 to modulate regulated alternative splicing events. Promotes exon skipping. Cooperates with PTBP1 to modulate switching between mutually exclusive exons during maturation of the TPM1 pre-mRNA (By similarity).

**Cellular Location**

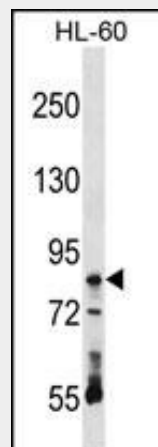
Nucleus. Cytoplasm. Note=Nuclear, in perinucleolar structures. Shuttles between nucleus and cytoplasm. Cytoplasm, at focal contacts and cell-cell contacts Associated with myotubes during muscle differentiation (By similarity)

**RAVER1 Antibody (N-term) - Protocols**

Provided below are standard protocols that you may find useful for product applications.

- [Western Blot](#)
- [Blocking Peptides](#)
- [Dot Blot](#)
- [Immunohistochemistry](#)
- [Immunofluorescence](#)
- [Immunoprecipitation](#)
- [Flow Cytometry](#)
- [Cell Culture](#)

**RAVER1 Antibody (N-term) - Images**



RAVR1 Antibody (N-term) (Cat. #AP16815a) western blot analysis in HL-60 cell line lysates (35ug/lane). This demonstrates the RAVR1 antibody detected the RAVR1 protein (arrow).

**RAVR1 Antibody (N-term) - Background**

RAVR1 cooperates with PTBP1 to modulate regulated alternative splicing events. Promotes exon skipping. Cooperates with PTBP1 to modulate switching between mutually exclusive exons during maturation of the TPM1 pre-mRNA (By similarity).

**RAVR1 Antibody (N-term) - References**

- Bailey, S.D., et al. Diabetes Care 33(10):2250-2253(2010)  
Han, S., et al. Hum. Immunol. 71(7):727-730(2010)  
Rajaraman, P., et al. Cancer Epidemiol. Biomarkers Prev. 19(5):1356-1361(2010)  
Talmud, P.J., et al. Am. J. Hum. Genet. 85(5):628-642(2009)  
Lee, J.H., et al. Structure 17(6):833-842(2009)