

**PLEKHF2 Antibody (Center)**  
**Affinity Purified Rabbit Polyclonal Antibody (Pab)**  
**Catalog # AP16820c**

**Specification**

---

**PLEKHF2 Antibody (Center) - Product Information**

|                   |                             |
|-------------------|-----------------------------|
| Application       | WB,E                        |
| Primary Accession | <a href="#">O9H8W4</a>      |
| Other Accession   | <a href="#">NP_078889.1</a> |
| Reactivity        | Human                       |
| Host              | Rabbit                      |
| Clonality         | Polyclonal                  |
| Isotype           | Rabbit IgG                  |
| Calculated MW     | 27798                       |
| Antigen Region    | 71-98                       |

**PLEKHF2 Antibody (Center) - Additional Information**

**Gene ID** 79666

**Other Names**

Pleckstrin homology domain-containing family F member 2, PH domain-containing family F member 2, Endoplasmic reticulum-associated apoptosis-involved protein containing PH and FYVE domains, EAPF, PH and FYVE domain-containing protein 2, Phafin-2, Phafin2, Zinc finger FYVE domain-containing protein 18, PLEKHF2, ZFYVE18

**Target/Specificity**

This PLEKHF2 antibody is generated from rabbits immunized with a KLH conjugated synthetic peptide between 71-98 amino acids from the Central region of human PLEKHF2.

**Dilution**

WB~~1:1000

**Format**

Purified polyclonal antibody supplied in PBS with 0.09% (W/V) sodium azide. This antibody is purified through a protein A column, followed by peptide affinity purification.

**Storage**

Maintain refrigerated at 2-8°C for up to 2 weeks. For long term storage store at -20°C in small aliquots to prevent freeze-thaw cycles.

**Precautions**

PLEKHF2 Antibody (Center) is for research use only and not for use in diagnostic or therapeutic procedures.

**PLEKHF2 Antibody (Center) - Protein Information**

**Name** PLEKHF2

**Synonyms** ZFYVE18

**Function** May play a role in early endosome fusion upstream of RAB5, hence regulating receptor trafficking and fluid-phase transport. Enhances cellular sensitivity to TNF-induced apoptosis (PubMed:[18288467](#)).

**Cellular Location**

Early endosome membrane; Peripheral membrane protein. Endoplasmic reticulum. Note=Colocalizes with EEA1 and RAB5 at endosomal membrane fusion hot spots (PubMed:19995552). May translocate to the endoplasmic reticulum in the early phase of apoptosis (PubMed:18288467).

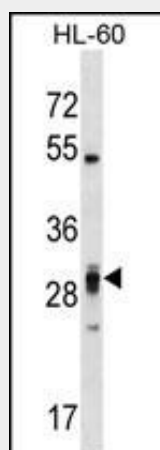
**Tissue Location**

Expressed in placenta, ovary and small intestine, as well as in heart and pancreas. Also expressed in peripheral blood mononuclear cells and dendritic cells.

**PLEKHF2 Antibody (Center) - Protocols**

Provided below are standard protocols that you may find useful for product applications.

- [Western Blot](#)
- [Blocking Peptides](#)
- [Dot Blot](#)
- [Immunohistochemistry](#)
- [Immunofluorescence](#)
- [Immunoprecipitation](#)
- [Flow Cytometry](#)
- [Cell Culture](#)

**PLEKHF2 Antibody (Center) - Images**

PLEKHF2 Antibody (Center) (Cat. #AP16820c) western blot analysis in HL-60 cell line lysates (35ug/lane). This demonstrates the PLEKHF2 antibody detected the PLEKHF2 protein (arrow).

**PLEKHF2 Antibody (Center) - Background**

PLEKHF2 (Phafin 2) is a PH and FYVE domain containing protein 2. The FYVE domain and Zinc binding domain targets proteins to membrane lipids via interaction with phosphatidylinositol 3 phosphate, PI3P. The FYVE domain and Zinc binding domain present in Fab1, YOTB, Vac1, and EEA1.

**PLEKHF2 Antibody (Center) - References**

Lin, W.J., et al. Biochem. Biophys. Res. Commun. 391(1):1043-1048(2010)  
Li, C., et al. J. Mol. Med. 86(4):471-484(2008)  
Olsen, J.V., et al. Cell 127(3):635-648(2006)