

PHEX Antibody (C-term)
Affinity Purified Rabbit Polyclonal Antibody (Pab)
Catalog # AP16834b

Specification

PHEX Antibody (C-term) - Product Information

Application	WB,E
Primary Accession	P78562
Other Accession	P70669 , NP_000435.3
Reactivity	Human
Predicted	Mouse
Host	Rabbit
Clonality	Polyclonal
Isotype	Rabbit IgG
Antigen Region	567-595

PHEX Antibody (C-term) - Additional Information

Gene ID 5251

Other Names

Phosphate-regulating neutral endopeptidase, 3424-, Metalloendopeptidase homolog PEX, Vitamin D-resistant hypophosphatemic rickets protein, X-linked hypophosphatemia protein, HYP, PHEX, PEX

Target/Specificity

This PHEX antibody is generated from rabbits immunized with a KLH conjugated synthetic peptide between 567-595 amino acids from the C-terminal region of human PHEX.

Dilution

WB~~1:1000

Format

Purified polyclonal antibody supplied in PBS with 0.09% (W/V) sodium azide. This antibody is purified through a protein A column, followed by peptide affinity purification.

Storage

Maintain refrigerated at 2-8°C for up to 2 weeks. For long term storage store at -20°C in small aliquots to prevent freeze-thaw cycles.

Precautions

PHEX Antibody (C-term) is for research use only and not for use in diagnostic or therapeutic procedures.

PHEX Antibody (C-term) - Protein Information

Name PHEX

Synonyms PEX

Function Peptidase that cleaves SIBLING (small integrin-binding ligand, N-linked glycoprotein)-derived ASARM peptides, thus regulating their biological activity (PubMed:[9593714](#), PubMed:[15664000](#), PubMed:[18162525](#), PubMed:[18597632](#)). Cleaves ASARM peptides between Ser and Glu or Asp residues (PubMed:[18597632](#)). Regulates osteogenic cell differentiation and bone mineralization through the cleavage of the MEPE-derived ASARM peptide (PubMed:[18597632](#)). Promotes dentin mineralization and renal phosphate reabsorption by cleaving DMP1- and MEPE-derived ASARM peptides (PubMed:[18597632](#), PubMed:[18162525](#)). Inhibits the cleavage of MEPE by CTSB/cathepsin B thus preventing MEPE degradation (PubMed:[12220505](#)).

Cellular Location

Cell membrane; Single-pass type II membrane protein

Tissue Location

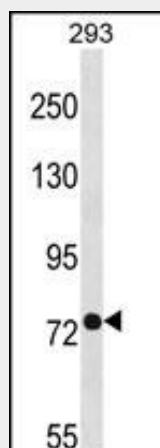
Specifically expressed in ovary (PubMed:9070861). Expressed at low levels in kidney (PubMed:9070861)

PHEX Antibody (C-term) - Protocols

Provided below are standard protocols that you may find useful for product applications.

- [Western Blot](#)
- [Blocking Peptides](#)
- [Dot Blot](#)
- [Immunohistochemistry](#)
- [Immunofluorescence](#)
- [Immunoprecipitation](#)
- [Flow Cytometry](#)
- [Cell Culture](#)

PHEX Antibody (C-term) - Images



PHEX Antibody (C-term) (Cat. #AP16834b) western blot analysis in 293 cell line lysates (35ug/lane). This demonstrates the PHEX antibody detected the PHEX protein (arrow).

PHEX Antibody (C-term) - Background

The protein encoded by this gene is a transmembrane endopeptidase that belongs to the type II integral membrane

zinc-dependent endopeptidase family. The protein is thought to be involved in bone and dentin mineralization and renal phosphate reabsorption. Mutations in this gene cause X-linked hypophosphatemic rickets.

PHEX Antibody (C-term) - References

Majewski, P.M., et al. J. Biol. Chem. 285(45):34828-34838(2010)
Yokoyama, K., et al. Nephron Clin Pract 115 (4), C237-C243 (2010) :
Clausmeyer, S., et al. Calcif. Tissue Int. 85(3):211-220(2009)
Gaucher, C., et al. Hum. Genet. 125(4):401-411(2009)
Strom, T.M., et al. Curr. Opin. Nephrol. Hypertens. 17(4):357-362(2008)