

TRPC1 Antibody (C-term)
Affinity Purified Rabbit Polyclonal Antibody (Pab)
Catalog # AP16863b**Specification**

TRPC1 Antibody (C-term) - Product Information

Application	WB,E
Primary Accession	P48995
Other Accession	Q9TUN9 , Q61056 , O18784 , NP_003295.1
Reactivity	Human
Predicted	Bovine, Mouse, Rabbit
Host	Rabbit
Clonality	Polyclonal
Isotype	Rabbit IgG
Calculated MW	91212
Antigen Region	765-793

TRPC1 Antibody (C-term) - Additional Information**Gene ID** 7220**Other Names**

Short transient receptor potential channel 1, TrpC1, Transient receptor protein 1, TRP-1, TRPC1, TRP1

Target/Specificity

This TRPC1 antibody is generated from rabbits immunized with a KLH conjugated synthetic peptide between 765-793 amino acids from the C-terminal region of human TRPC1.

Dilution

WB~~1:1000

Format

Purified polyclonal antibody supplied in PBS with 0.09% (W/V) sodium azide. This antibody is purified through a protein A column, followed by peptide affinity purification.

Storage

Maintain refrigerated at 2-8°C for up to 2 weeks. For long term storage store at -20°C in small aliquots to prevent freeze-thaw cycles.

Precautions

TRPC1 Antibody (C-term) is for research use only and not for use in diagnostic or therapeutic procedures.

TRPC1 Antibody (C-term) - Protein Information**Name** TRPC1

Synonyms TRP1

Function Thought to form a receptor-activated non-selective calcium permeant cation channel. Probably is operated by a phosphatidylinositol second messenger system activated by receptor tyrosine kinases or G- protein coupled receptors. Seems to be also activated by intracellular calcium store depletion.

Cellular Location

Membrane; Multi-pass membrane protein.

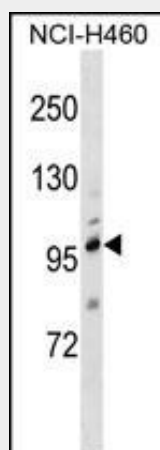
Tissue Location

Seems to be ubiquitous.

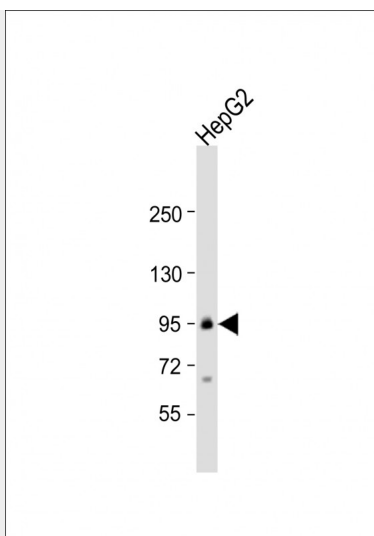
TRPC1 Antibody (C-term) - Protocols

Provided below are standard protocols that you may find useful for product applications.

- [Western Blot](#)
- [Blocking Peptides](#)
- [Dot Blot](#)
- [Immunohistochemistry](#)
- [Immunofluorescence](#)
- [Immunoprecipitation](#)
- [Flow Cytometry](#)
- [Cell Culture](#)

TRPC1 Antibody (C-term) - Images

TRPC1 Antibody (C-term) (Cat. #AP16863b) western blot analysis in NCI-H460 cell line lysates (35ug/lane). This demonstrates the TRPC1 antibody detected the TRPC1 protein (arrow).



Anti-TRPC1 Antibody (C-term) at 1:1000 dilution + HepG2 whole cell lysate Lysates/proteins at 20 µg per lane. Secondary Goat Anti-Rabbit IgG, (H+L), Peroxidase conjugated at 1/10000 dilution. Predicted band size : 91 kDa Blocking/Dilution buffer: 5% NFDM/TBST.

TRPC1 Antibody (C-term) - Background

TRPC1 belongs to the transient receptor potential (TRP) superfamily of cation channels. TRP cation channels are involved in diverse physiologic processes, including receptor- and store-operated Ca^{2+} entry, mineral absorption, and cell death. They also function as sensors for pain, heat, cold, sound, stretch, and osmotic changes (Zhang et al., 2009 [PubMed 19193631]).

TRPC1 Antibody (C-term) - References

Bailey, S.D., et al. Diabetes Care 33(10):2250-2253(2010)
Bomben, V.C., et al. Glia 58(10):1145-1156(2010)
Lu, M., et al. J. Mol. Endocrinol. 44(5):285-294(2010)
Gonzalez-Cobos, J.C., et al. Front. Biosci. 15, 1023-1039 (2010) :
Ingueneau, C., et al. J. Cell. Mol. Med. 13 (8B), 1620-1631 (2009) :