

PSG2 Antibody (C-term)
Affinity Purified Rabbit Polyclonal Antibody (Pab)
Catalog # AP16905b

Specification

PSG2 Antibody (C-term) - Product Information

Application	WB,E
Primary Accession	P11465
Other Accession	NP_112536.2
Reactivity	Human
Host	Rabbit
Clonality	Polyclonal
Isotype	Rabbit IgG
Calculated MW	37216
Antigen Region	225-254

PSG2 Antibody (C-term) - Additional Information

Gene ID 5670

Other Names

Pregnancy-specific beta-1-glycoprotein 2, PS-beta-G-2, PSBG-2, Pregnancy-specific glycoprotein 2, Pregnancy-specific beta-1 glycoprotein E, PS-beta-E, PSG2, PSBG2

Target/Specificity

This PSG2 antibody is generated from rabbits immunized with a KLH conjugated synthetic peptide between 225-254 amino acids from the C-terminal region of human PSG2.

Dilution

WB~~1:1000

Format

Purified polyclonal antibody supplied in PBS with 0.09% (W/V) sodium azide. This antibody is purified through a protein A column, followed by peptide affinity purification.

Storage

Maintain refrigerated at 2-8°C for up to 2 weeks. For long term storage store at -20°C in small aliquots to prevent freeze-thaw cycles.

Precautions

PSG2 Antibody (C-term) is for research use only and not for use in diagnostic or therapeutic procedures.

PSG2 Antibody (C-term) - Protein Information

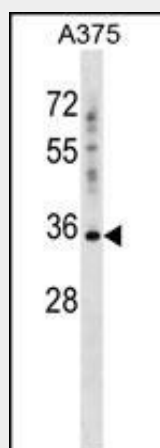
Name PSG2

Synonyms PSBG2

Cellular Location
Secreted.**PSG2 Antibody (C-term) - Protocols**

Provided below are standard protocols that you may find useful for product applications.

- [Western Blot](#)
- [Blocking Peptides](#)
- [Dot Blot](#)
- [Immunohistochemistry](#)
- [Immunofluorescence](#)
- [Immunoprecipitation](#)
- [Flow Cytometry](#)
- [Cell Culture](#)

PSG2 Antibody (C-term) - Images

PSG2 Antibody (C-term) (Cat. #AP16905b) western blot analysis in A375 cell line lysates (35ug/lane). This demonstrates the PSG2 antibody detected the PSG2 protein (arrow).

PSG2 Antibody (C-term) - Background

The human pregnancy-specific glycoproteins (PSGs) are a family of proteins that are synthesized in large amounts by placental trophoblasts and released into the maternal circulation during pregnancy. Molecular cloning and analysis of several PSG genes has indicated that the PSGs form a subgroup of the carcinoembryonic antigen (CEA) gene family, which belongs to the immunoglobulin superfamily of genes. Members of the CEA family consist of a single N domain, with structural similarity to the immunoglobulin variable domains, followed by a variable number of immunoglobulin constant-like A and/or B domains. Most PSGs have an arg-gly-asp (RGD) motif, which has been shown to function as an adhesion recognition signal for several integrins, in the N-terminal domain (summary by Teglund et al., 1994 [PubMed 7851896]). For additional general information about the PSG gene family, see PSG1 (MIM 176390).

PSG2 Antibody (C-term) - References

Tsavaris, N., et al. J Chemother 21(6):673-680(2009)
Mennuni, C., et al. Int. J. Cancer 117(3):444-455(2005)
Colland, F., et al. Genome Res. 14(7):1324-1332(2004)
Grimwood, J., et al. Nature 428(6982):529-535(2004)
Teglund, S., et al. Genomics 23(3):669-684(1994)