

**CPNE6 Antibody (N-term)**  
**Affinity Purified Rabbit Polyclonal Antibody (Pab)**  
**Catalog # AP16941a**

**Specification**

---

**CPNE6 Antibody (N-term) - Product Information**

Application	WB,E
Primary Accession	<a href="#">O95741</a>
Other Accession	<a href="#">NP_006023.1</a>
Reactivity	Human, Mouse
Host	Rabbit
Clonality	Polyclonal
Isotype	Rabbit IgG
Calculated MW	61991
Antigen Region	138-166

**CPNE6 Antibody (N-term) - Additional Information**

**Gene ID** 9362

**Other Names**

Copine-6, Copine VI, Neuronal-copine, N-copine, CPNE6

**Target/Specificity**

This CPNE6 antibody is generated from rabbits immunized with a KLH conjugated synthetic peptide between 138-166 amino acids from the N-terminal region of human CPNE6.

**Dilution**

WB~~1:1000

**Format**

Purified polyclonal antibody supplied in PBS with 0.09% (W/V) sodium azide. This antibody is purified through a protein A column, followed by peptide affinity purification.

**Storage**

Maintain refrigerated at 2-8°C for up to 2 weeks. For long term storage store at -20°C in small aliquots to prevent freeze-thaw cycles.

**Precautions**

CPNE6 Antibody (N-term) is for research use only and not for use in diagnostic or therapeutic procedures.

**CPNE6 Antibody (N-term) - Protein Information**

**Name** CPNE6 ([HGNC:2319](#))

**Function** Calcium-dependent phospholipid-binding protein that plays a role in calcium-mediated intracellular processes. Binds phospholipid membranes in a calcium-dependent manner (By

similarity). Plays a role in dendrite formation by melanocytes (PubMed:[23999003](#)).

#### Cellular Location

Cytoplasm {ECO:0000250|UniProtKB:Q9Z140}. Cell membrane {ECO:0000250|UniProtKB:Q9Z140}. Endosome {ECO:0000250|UniProtKB:Q9Z140}. Cytoplasmic vesicle, clathrin-coated vesicle {ECO:0000250|UniProtKB:Q9Z140}. Perikaryon {ECO:0000250|UniProtKB:Q9Z140}. Cell projection, dendrite {ECO:0000250|UniProtKB:Q9Z140}. Note=Mainly cytoplasmic in absence of calcium. Associated predominantly with membranes in presence of calcium. Translocates to the cell membrane in a calcium-dependent manner. Colocalized with transferrin in intracellular clathrin-coated membrane vesicles in a calcium-dependent manner {ECO:0000250|UniProtKB:Q9Z140}

#### Tissue Location

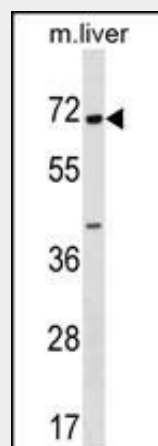
Widely expressed in the brain (PubMed:9645480, PubMed:10403379, PubMed:12949241). Expressed weakly in the kidney, liver and fetal heart (PubMed:12949241). Expressed in melanocytes (PubMed:23999003).

### CPNE6 Antibody (N-term) - Protocols

Provided below are standard protocols that you may find useful for product applications.

- [Western Blot](#)
- [Blocking Peptides](#)
- [Dot Blot](#)
- [Immunohistochemistry](#)
- [Immunofluorescence](#)
- [Immunoprecipitation](#)
- [Flow Cytometry](#)
- [Cell Culture](#)

### CPNE6 Antibody (N-term) - Images



CPNE6 Antibody (N-term) (Cat. #AP16941a) western blot analysis in mouse liver tissue lysates (35ug/lane). This demonstrates the CPNE6 antibody detected the CPNE6 protein (arrow).

### CPNE6 Antibody (N-term) - Background

This gene encodes a brain-specific member of the copine family, which is composed of calcium-dependent membrane-binding proteins. The gene product contains two N-terminal C2 domains, and

one von Willebrand factor A domain. It may have a role in synaptic plasticity.

#### **CPNE6 Antibody (N-term) - References**

Caudell, E.G., et al. Biochemistry 39(42):13034-13043(2000)  
Nakayama, T., et al. FEBS Lett. 453 (1-2), 77-80 (1999) :  
Nakayama, T., et al. J. Neurochem. 72(1):373-379(1999)  
Nakayama, T., et al. FEBS Lett. 428 (1-2), 80-84 (1998) :