

GCSH Antibody (N-term)
Affinity Purified Rabbit Polyclonal Antibody (Pab)
Catalog # AP16949a

Specification

GCSH Antibody (N-term) - Product Information

| | |
|-------------------|---|
| Application | WB,E |
| Primary Accession | P23434 |
| Other Accession | O9N121 , P20821 |
| Reactivity | Human |
| Predicted | Bovine, Rabbit |
| Host | Rabbit |
| Clonality | Polyclonal |
| Isotype | Rabbit IgG |
| Calculated MW | 18885 |
| Antigen Region | 27-56 |

GCSH Antibody (N-term) - Additional Information

Gene ID 2653

Other Names

Glycine cleavage system H protein, mitochondrial, Lipoic acid-containing protein, GCSH

Target/Specificity

This GCSH antibody is generated from rabbits immunized with a KLH conjugated synthetic peptide between 27-56 amino acids from the N-terminal region of human GCSH.

Dilution

WB~~1:1000

Format

Purified polyclonal antibody supplied in PBS with 0.09% (W/V) sodium azide. This antibody is purified through a protein A column, followed by peptide affinity purification.

Storage

Maintain refrigerated at 2-8°C for up to 2 weeks. For long term storage store at -20°C in small aliquots to prevent freeze-thaw cycles.

Precautions

GCSH Antibody (N-term) is for research use only and not for use in diagnostic or therapeutic procedures.

GCSH Antibody (N-term) - Protein Information

Name GCSH ([HGNC:4208](#))

Function The glycine cleavage system catalyzes the degradation of glycine. The H protein (GCSH)

shuttles the methylamine group of glycine from the P protein (GLDC) to the T protein (GCST). Has a pivotal role in the lipoylation of enzymes involved in cellular energetics such as the mitochondrial dihydrolipoyllysine-residue acetyltransferase component of pyruvate dehydrogenase complex (DLAT), and the mitochondrial dihydrolipoyllysine-residue succinyltransferase component of 2-oxoglutarate dehydrogenase complex (DLST) (PubMed:[36190515](#)).

Cellular Location

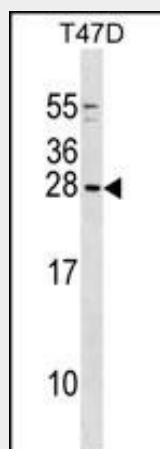
Mitochondrion.

GCSH Antibody (N-term) - Protocols

Provided below are standard protocols that you may find useful for product applications.

- [Western Blot](#)
- [Blocking Peptides](#)
- [Dot Blot](#)
- [Immunohistochemistry](#)
- [Immunofluorescence](#)
- [Immunoprecipitation](#)
- [Flow Cytometry](#)
- [Cell Culture](#)

GCSH Antibody (N-term) - Images



GCSH Antibody (N-term) (Cat. #AP16949a) western blot analysis in T47D cell line lysates (35ug/lane). This demonstrates the GCSH antibody detected the GCSH protein (arrow).

GCSH Antibody (N-term) - Background

The glycine cleavage system catalyzes the degradation of glycine. The H protein shuttles the methylamine group of glycine from the P protein to the T protein.