

TRIM42 Antibody (Center)
Affinity Purified Rabbit Polyclonal Antibody (Pab)
Catalog # AP16968c**Specification**

TRIM42 Antibody (Center) - Product Information

| | |
|-------------------|-----------------------------|
| Application | WB,E |
| Primary Accession | Q8IWZ5 |
| Other Accession | NP_689829.3 |
| Reactivity | Human |
| Host | Rabbit |
| Clonality | Polyclonal |
| Isotype | Rabbit IgG |
| Calculated MW | 82745 |
| Antigen Region | 441-470 |

TRIM42 Antibody (Center) - Additional Information**Gene ID** 287015**Other Names**

Tripartite motif-containing protein 42, TRIM42

Target/Specificity

This TRIM42 antibody is generated from rabbits immunized with a KLH conjugated synthetic peptide between 441-470 amino acids from the Central region of human TRIM42.

Dilution

WB~~1:1000

Format

Purified polyclonal antibody supplied in PBS with 0.09% (W/V) sodium azide. This antibody is purified through a protein A column, followed by peptide affinity purification.

Storage

Maintain refrigerated at 2-8°C for up to 2 weeks. For long term storage store at -20°C in small aliquots to prevent freeze-thaw cycles.

Precautions

TRIM42 Antibody (Center) is for research use only and not for use in diagnostic or therapeutic procedures.

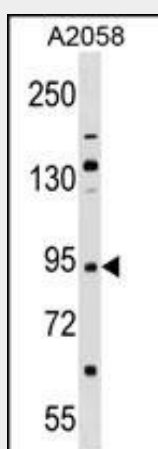
TRIM42 Antibody (Center) - Protein Information**Name** TRIM42

TRIM42 Antibody (Center) - Protocols

Provided below are standard protocols that you may find useful for product applications.

- [Western Blot](#)
- [Blocking Peptides](#)
- [Dot Blot](#)
- [Immunohistochemistry](#)
- [Immunofluorescence](#)
- [Immunoprecipitation](#)
- [Flow Cytometry](#)
- [Cell Culture](#)

TRIM42 Antibody (Center) - Images



TRIM42 Antibody (Center) (Cat. #AP16968c) western blot analysis in A2058 cell line lysates (35ug/lane). This demonstrates the TRIM42 antibody detected the TRIM42 protein (arrow).

TRIM42 Antibody (Center) - Background

TRIM42 is a member of the tripartite motif (TRIM) family. The TRIM motif includes three zinc-binding domains; a RING, a B-box type 1 and a B-box type 2, and a coiled-coil region.