

**CARM1 Antibody (Center)**  
**Affinity Purified Rabbit Polyclonal Antibody (Pab)**  
**Catalog # AP16980c****Specification**

---

**CARM1 Antibody (Center) - Product Information**

Application	WB,E
Primary Accession	<a href="#">Q86X55</a>
Other Accession	<a href="#">Q4AE70</a> , <a href="#">Q9WVG6</a> , <a href="#">NP_954592.1</a>
Reactivity	Human
Predicted	Mouse, Rat
Host	Rabbit
Clonality	Polyclonal
Isotype	Rabbit IgG
Antigen Region	347-375

**CARM1 Antibody (Center) - Additional Information****Gene ID** 10498**Other Names**

Histone-arginine methyltransferase CARM1, 211-, Coactivator-associated arginine methyltransferase 1, Protein arginine N-methyltransferase 4, CARM1, PRMT4

**Target/Specificity**

This CARM1 antibody is generated from rabbits immunized with a KLH conjugated synthetic peptide between 347-375 amino acids from the Central region of human CARM1.

**Dilution**

WB~~1:1000

**Format**

Purified polyclonal antibody supplied in PBS with 0.09% (W/V) sodium azide. This antibody is purified through a protein A column, followed by peptide affinity purification.

**Storage**

Maintain refrigerated at 2-8°C for up to 2 weeks. For long term storage store at -20°C in small aliquots to prevent freeze-thaw cycles.

**Precautions**

CARM1 Antibody (Center) is for research use only and not for use in diagnostic or therapeutic procedures.

**CARM1 Antibody (Center) - Protein Information****Name** CARM1**Synonyms** PRMT4

**Function** Methylates (mono- and asymmetric dimethylation) the guanidino nitrogens of arginyl residues in several proteins involved in DNA packaging, transcription regulation, pre-mRNA splicing, and mRNA stability (PubMed:[12237300](#), PubMed:[16497732](#), PubMed:[19405910](#)). Recruited to promoters upon gene activation together with histone acetyltransferases from EP300/P300 and p160 families, methylates histone H3 at 'Arg-17' (H3R17me), forming mainly asymmetric dimethylarginine (H3R17me2a), leading to activates transcription via chromatin remodeling (PubMed:[12237300](#), PubMed:[16497732](#), PubMed:[19405910](#)). During nuclear hormone receptor activation and TCF7L2/TCF4 activation, acts synergically with EP300/P300 and either one of the p160 histone acetyltransferases NCOA1/SRC1, NCOA2/GRIP1 and NCOA3/ACTR or CTNNB1/beta-catenin to activate transcription (By similarity). During myogenic transcriptional activation, acts together with NCOA3/ACTR as a coactivator for MEF2C (By similarity). During monocyte inflammatory stimulation, acts together with EP300/P300 as a coactivator for NF-kappa-B (By similarity). Acts as a coactivator for PPARG, promotes adipocyte differentiation and the accumulation of brown fat tissue (By similarity). Plays a role in the regulation of pre-mRNA alternative splicing by methylation of splicing factors (By similarity). Also seems to be involved in p53/TP53 transcriptional activation (By similarity). Methylates EP300/P300, both at 'Arg-2142', which may loosen its interaction with NCOA2/GRIP1, and at 'Arg-580' and 'Arg-604' in the KIX domain, which impairs its interaction with CREB and inhibits CREB-dependent transcriptional activation (PubMed:[15731352](#)). Also methylates arginine residues in RNA-binding proteins PABPC1, ELAVL1 and ELAV4, which may affect their mRNA- stabilizing properties and the half-life of their target mRNAs (By similarity). Acts as a transcriptional coactivator of ACACA/acetyl-CoA carboxylase by enriching H3R17 methylation at its promoter, thereby positively regulating fatty acid synthesis (By similarity). Independently of its methyltransferase activity, involved in replication fork progression: promotes PARP1 recruitment to replication forks, leading to poly-ADP-ribosylation of chromatin at replication forks and reduced fork speed (PubMed:[33412112](#)).

#### **Cellular Location**

Nucleus. Cytoplasm. Chromosome. Note=Mainly nuclear during the G1, S and G2 phases of the cell cycle (PubMed:19843527). Cytoplasmic during mitosis, after breakup of the nuclear membrane (PubMed:19843527) Localizes to replication forks (PubMed:33412112)

#### **Tissue Location**

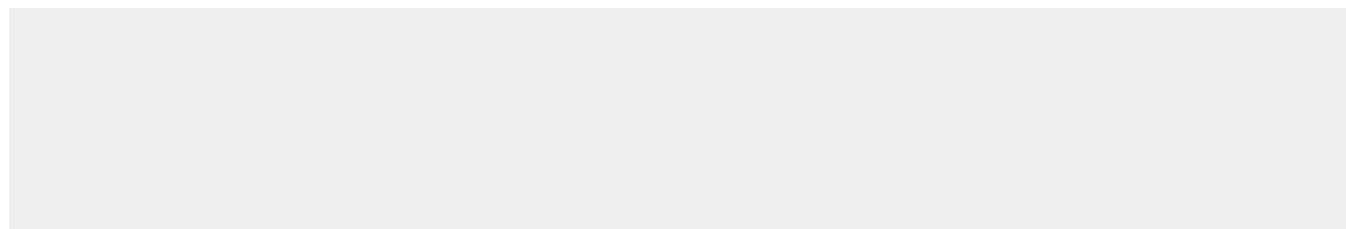
Overexpressed in prostate adenocarcinomas and high- grade prostatic intraepithelial neoplasia

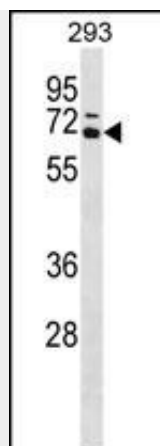
### **CARM1 Antibody (Center) - Protocols**

Provided below are standard protocols that you may find useful for product applications.

- [Western Blot](#)
- [Blocking Peptides](#)
- [Dot Blot](#)
- [Immunohistochemistry](#)
- [Immunofluorescence](#)
- [Immunoprecipitation](#)
- [Flow Cytometry](#)
- [Cell Culture](#)

### **CARM1 Antibody (Center) - Images**





CARM1 Antibody (Center) (Cat. #AP16980c) western blot analysis in 293 cell line lysates (35ug/lane). This demonstrates the CARM1 antibody detected the CARM1 protein (arrow).

#### **CARM1 Antibody (Center) - Background**

Protein arginine N-methyltransferases, such as CARM1, catalyze the transfer of a methyl group from S-adenosyl-L-methionine to the side chain nitrogens of arginine residues within proteins to form methylated arginine derivatives and S-adenosyl-L-homocysteine. Protein arginine methylation has been implicated in signal transduction, metabolism of nascent pre-RNA, and transcriptional activation (Frankel et al., 2002 [PubMed 11724789]).

#### **CARM1 Antibody (Center) - References**

Gao, X., et al. J. Cell. Biochem. 110(1):162-170(2010)  
Carascossa, S., et al. Genes Dev. 24(7):708-719(2010)  
Kim, Y.R., et al. BMC Cancer 10, 197 (2010) :  
Ito, T., et al. BMC Dev. Biol. 9, 47 (2009) :  
Haiman, C.A., et al. BMC Cancer 9, 43 (2009) :