

SIPA1 Antibody (C-term)
Affinity Purified Rabbit Polyclonal Antibody (Pab)
Catalog # AP16989B**Specification**

SIPA1 Antibody (C-term) - Product Information

Application	WB,E
Primary Accession	Q96FS4
Other Accession	NP_006738.3 , NP_694985.29
Reactivity	Human
Host	Rabbit
Clonality	Polyclonal
Isotype	Rabbit IgG
Calculated MW	112149
Antigen Region	942-970

SIPA1 Antibody (C-term) - Additional Information**Gene ID** 6494**Other Names**Signal-induced proliferation-associated protein 1, Sipa-1, GTPase-activating protein Spa-1, p130
SPA-1, SIPA1, SPA1**Target/Specificity**

This SIPA1 antibody is generated from rabbits immunized with a KLH conjugated synthetic peptide between 942-970 amino acids from the C-terminal region of human SIPA1.

Dilution

WB~~1:1000

Format

Purified polyclonal antibody supplied in PBS with 0.09% (W/V) sodium azide. This antibody is purified through a protein A column, followed by peptide affinity purification.

Storage

Maintain refrigerated at 2-8°C for up to 2 weeks. For long term storage store at -20°C in small aliquots to prevent freeze-thaw cycles.

Precautions

SIPA1 Antibody (C-term) is for research use only and not for use in diagnostic or therapeutic procedures.

SIPA1 Antibody (C-term) - Protein Information**Name** SIPA1**Synonyms** SPA1

Function GTPase activator for the nuclear Ras-related regulatory proteins Rap1 and Rap2 in vitro, converting them to the putatively inactive GDP-bound state (PubMed:[9346962](#)). Affects cell cycle progression (By similarity).

Cellular Location

Nucleus. Cytoplasm, perinuclear region. Endomembrane system; Peripheral membrane protein.
Note=Mostly localized in the perinuclear membraneous region

Tissue Location

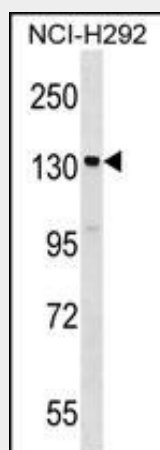
Expressed in fetal as well as in adult tissues. Expressed abundantly in the lymphoid tissues such as thymus, spleen and peripheral blood lymphocytes and also shows a significant expression in the spinal cord

SIPA1 Antibody (C-term) - Protocols

Provided below are standard protocols that you may find useful for product applications.

- [Western Blot](#)
- [Blocking Peptides](#)
- [Dot Blot](#)
- [Immunohistochemistry](#)
- [Immunofluorescence](#)
- [Immunoprecipitation](#)
- [Flow Cytometry](#)
- [Cell Culture](#)

SIPA1 Antibody (C-term) - Images



SIPA1 Antibody (C-term) (Cat. #AP16989b) western blot analysis in NCI-H292 cell line lysates (35ug/lane). This demonstrates the SIPA1 antibody detected the SIPA1 protein (arrow).

SIPA1 Antibody (C-term) - Background

The product of this gene is a mitogen induced GTPase activating protein (GAP). It exhibits a specific GAP activity for Ras-related regulatory proteins Rap1 and Rap2, but not for Ran or other small GTPases. This protein may also hamper mitogen-induced cell cycle progression when abnormally or prematurely expressed. It is localized to the perinuclear region. Two alternatively spliced variants encoding the same isoform have been characterized to date.

SIPA1 Antibody (C-term) - References

Bailey, S.D., et al. Diabetes Care 33(10):2250-2253(2010)
Brooks, R., et al. Gynecol. Oncol. 116(3):539-543(2010)
Hosgood, H.D. III, et al. Occup Environ Med 66(12):848-853(2009)
Talmud, P.J., et al. Am. J. Hum. Genet. 85(5):628-642(2009)
Hsieh, S.M., et al. Breast Cancer Res. 11 (5), R75 (2009) :