

IL23R Antibody (C-term)
Affinity Purified Rabbit Polyclonal Antibody (Pab)
Catalog # AP17012b**Specification**

IL23R Antibody (C-term) - Product Information

Application	WB,E
Primary Accession	Q5VWK5
Other Accession	NP_653302.2
Reactivity	Human
Host	Rabbit
Clonality	Polyclonal
Isotype	Rabbit IgG
Calculated MW	71722
Antigen Region	428-457

IL23R Antibody (C-term) - Additional Information**Gene ID** 149233**Other Names**

Interleukin-23 receptor, IL-23 receptor, IL-23R, IL23R

Target/Specificity

This IL23R antibody is generated from rabbits immunized with a KLH conjugated synthetic peptide between 428-457 amino acids from the C-terminal region of human IL23R.

Dilution

WB~~1:1000

Format

Purified polyclonal antibody supplied in PBS with 0.09% (W/V) sodium azide. This antibody is purified through a protein A column, followed by peptide affinity purification.

Storage

Maintain refrigerated at 2-8°C for up to 2 weeks. For long term storage store at -20°C in small aliquots to prevent freeze-thaw cycles.

Precautions

IL23R Antibody (C-term) is for research use only and not for use in diagnostic or therapeutic procedures.

IL23R Antibody (C-term) - Protein Information**Name** IL23R

Function Associates with IL12RB1 to form the interleukin-23 receptor. Binds IL23 and mediates T-cells, NK cells and possibly certain macrophage/myeloid cells stimulation probably through

activation of the Jak-Stat signaling cascade. IL23 functions in innate and adaptive immunity and may participate in acute response to infection in peripheral tissues. IL23 may be responsible for autoimmune inflammatory diseases and be important for tumorigenesis.

Cellular Location

Cell membrane; Single-pass type I membrane protein

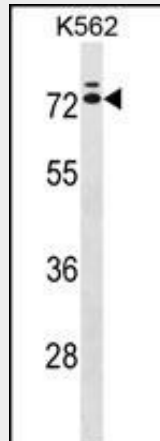
Tissue Location

Expressed by monocytes, Th1, Th0, NK and dendritic cells. Isoform 1 is specifically expressed in NK cells

IL23R Antibody (C-term) - Protocols

Provided below are standard protocols that you may find useful for product applications.

- [Western Blot](#)
- [Blocking Peptides](#)
- [Dot Blot](#)
- [Immunohistochemistry](#)
- [Immunofluorescence](#)
- [Immunoprecipitation](#)
- [Flow Cytometry](#)
- [Cell Culture](#)

IL23R Antibody (C-term) - Images

IL23R Antibody (C-term) (Cat. #AP17012b) western blot analysis in K562 cell line lysates (35ug/lane). This demonstrates the IL23R antibody detected the IL23R protein (arrow).

IL23R Antibody (C-term) - Background

The protein encoded by this gene is a subunit of the receptor for IL23A/IL23. This protein pairs with the receptor molecule IL12RB1/IL12Rbeta1, and both are required for IL23A signaling. This protein associates constitutively with Janus kinase 2 (JAK2), and also binds to transcription activator STAT3 in a ligand-dependent manner.

IL23R Antibody (C-term) - References

Bailey, S.D., et al. Diabetes Care 33(10):2250-2253(2010)
Chen, J., et al. Mol. Carcinog. 49(10):862-868(2010)
Mizuki, N., et al. Nat. Genet. 42(8):703-706(2010)
Remmers, E.F., et al. Nat. Genet. 42(8):698-702(2010)
Elmaagacli, A.H., et al. Bone Marrow Transplant. (2010) In press :