

**LDB3 Antibody (Center)**  
**Affinity Purified Rabbit Polyclonal Antibody (Pab)**  
**Catalog # AP17020c****Specification**

---

**LDB3 Antibody (Center) - Product Information**

Application	WB,E
Primary Accession	<a href="#">O75112</a>
Other Accession	<a href="#">NP_001073584.1</a> , <a href="#">NP_001073583.1</a>
Reactivity	Human
Host	Rabbit
Clonality	Polyclonal
Isotype	Rabbit IgG
Calculated MW	77135
Antigen Region	235-262

**LDB3 Antibody (Center) - Additional Information****Gene ID** 11155**Other Names**

LIM domain-binding protein 3, Protein cypher, Z-band alternatively spliced PDZ-motif protein, LDB3  
([http://www.genenames.org/cgi-bin/gene\\_symbol\\_report?hgnc\\_id=15710](http://www.genenames.org/cgi-bin/gene_symbol_report?hgnc_id=15710))  
target="\_blank">HGNC:15710</a>)

**Target/Specificity**

This LDB3 antibody is generated from rabbits immunized with a KLH conjugated synthetic peptide between 235-262 amino acids from the Central region of human LDB3.

**Dilution**

WB~~1:1000

**Format**

Purified polyclonal antibody supplied in PBS with 0.09% (W/V) sodium azide. This antibody is purified through a protein A column, followed by peptide affinity purification.

**Storage**

Maintain refrigerated at 2-8°C for up to 2 weeks. For long term storage store at -20°C in small aliquots to prevent freeze-thaw cycles.

**Precautions**

LDB3 Antibody (Center) is for research use only and not for use in diagnostic or therapeutic procedures.

**LDB3 Antibody (Center) - Protein Information****Name** LDB3 ([HGNC:15710](#))

**Function** May function as an adapter in striated muscle to couple protein kinase C-mediated signaling via its LIM domains to the cytoskeleton.

**Cellular Location**

Cytoplasm, perinuclear region. Cell projection, pseudopodium. Cytoplasm, cytoskeleton. Cytoplasm, myofibril, sarcomere, Z line. Note=Localized to the cytoplasm around nuclei and pseudopodia of undifferentiated cells and detected throughout the myotubes of differentiated cells. Colocalizes with ACTN2 at the Z-lines

**Tissue Location**

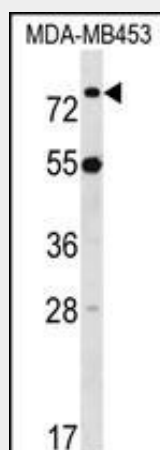
Expressed primarily in skeletal muscle and to a lesser extent in heart. Also detected in brain and placenta

**LDB3 Antibody (Center) - Protocols**

Provided below are standard protocols that you may find useful for product applications.

- [Western Blot](#)
- [Blocking Peptides](#)
- [Dot Blot](#)
- [Immunohistochemistry](#)
- [Immunofluorescence](#)
- [Immunoprecipitation](#)
- [Flow Cytometry](#)
- [Cell Culture](#)

**LDB3 Antibody (Center) - Images**



LDB3 Antibody (Center) (Cat. #AP17020c) western blot analysis in MDA-MB453 cell line lysates (35ug/lane). This demonstrates the LDB3 antibody detected the LDB3 protein (arrow).

**LDB3 Antibody (Center) - Background**

This gene encodes a PDZ domain-containing protein. PDZ motifs are modular protein-protein interaction domains consisting of 80-120 amino acid residues. PDZ domain-containing proteins interact with each other in cytoskeletal assembly or with other proteins involved in targeting and clustering of membrane proteins. The protein encoded by this gene interacts with alpha-actinin-2 through its N-terminal PDZ domain and with protein kinase C via its

C-terminal LIM domains. The LIM domain is a cysteine-rich motif defined by 50-60 amino acids containing two zinc-binding modules. This protein also interacts with all three members of the myozenin family. Mutations in this gene have been associated with myofibrillar myopathy and dilated cardiomyopathy. Alternatively spliced transcript variants encoding different isoforms have been identified; all isoforms have N-terminal PDZ domains while only longer isoforms (1, 2 and 5) have C-terminal LIM domains. [provided by RefSeq].

#### **LDB3 Antibody (Center) - References**

Lechuga, S., et al. Exp. Cell Res. 316(19):3124-3139(2010)  
Zimmerman, R.S., et al. Genet. Med. 12(5):268-278(2010)  
Vihola, A., et al. Acta Neuropathol. 119(4):465-479(2010)  
Rampersaud, E., et al. Ann. Hum. Genet. 74(2):110-116(2010)  
Aurino, S., et al. Acta Myol 27, 90-97 (2008) :