

SEC23A Antibody (Center)
Affinity Purified Rabbit Polyclonal Antibody (Pab)
Catalog # AP17030C**Specification**

SEC23A Antibody (Center) - Product Information

Application	WB,E
Primary Accession	Q15436
Other Accession	NP_006355.2
Reactivity	Human
Host	Rabbit
Clonality	Polyclonal
Isotype	Rabbit IgG
Calculated MW	86161
Antigen Region	299-328

SEC23A Antibody (Center) - Additional Information**Gene ID** 10484**Other Names**

Protein transport protein Sec23A, SEC23-related protein A, SEC23A

Target/Specificity

This SEC23A antibody is generated from rabbits immunized with a KLH conjugated synthetic peptide between 299-328 amino acids from the Central region of human SEC23A.

Dilution

WB~~1:1000

Format

Purified polyclonal antibody supplied in PBS with 0.09% (W/V) sodium azide. This antibody is purified through a protein A column, followed by peptide affinity purification.

Storage

Maintain refrigerated at 2-8°C for up to 2 weeks. For long term storage store at -20°C in small aliquots to prevent freeze-thaw cycles.

Precautions

SEC23A Antibody (Center) is for research use only and not for use in diagnostic or therapeutic procedures.

SEC23A Antibody (Center) - Protein Information**Name** SEC23A ([HGNC:10701](#))

Function Component of the coat protein complex II (COPII) which promotes the formation of transport vesicles from the endoplasmic reticulum (ER). The coat has two main functions, the

physical deformation of the endoplasmic reticulum membrane into vesicles and the selection of cargo molecules for their transport to the Golgi complex. Required for the translocation of insulin-induced glucose transporter SLC2A4/GLUT4 to the cell membrane (By similarity).

Cellular Location

Cytoplasmic vesicle, COPII-coated vesicle membrane; Peripheral membrane protein; Cytoplasmic side. Endoplasmic reticulum membrane; Peripheral membrane protein; Cytoplasmic side. Cytoplasm, cytosol. Note=Enriched at endoplasmic reticulum exit sites, also known as transitional endoplasmic reticulum (tER)

Tissue Location

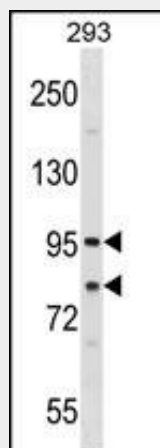
Ubiquitously expressed.

SEC23A Antibody (Center) - Protocols

Provided below are standard protocols that you may find useful for product applications.

- [Western Blot](#)
- [Blocking Peptides](#)
- [Dot Blot](#)
- [Immunohistochemistry](#)
- [Immunofluorescence](#)
- [Immunoprecipitation](#)
- [Flow Cytometry](#)
- [Cell Culture](#)

SEC23A Antibody (Center) - Images



SEC23A Antibody (Center) (Cat. #AP17030c) western blot analysis in 293 cell line lysates (35ug/lane). This demonstrates the SEC23A antibody detected the SEC23A protein (arrow).

SEC23A Antibody (Center) - Background

The protein encoded by this gene is a member of the SEC23 subfamily of the SEC23/SEC24 family. It is part of a protein complex and found in the ribosome-free transitional face of the endoplasmic reticulum (ER) and associated vesicles. This protein has similarity to yeast Sec23p component of COPII. COPII is the coat protein complex responsible for vesicle budding from the ER. The encoded protein is suggested to play a role in the ER-Golgi

protein trafficking.

SEC23A Antibody (Center) - References

Rose, J.E., et al. Mol. Med. 16 (7-8), 247-253 (2010) :
Townley, A.K., et al. J. Cell. Sci. 121 (PT 18), 3025-3034 (2008) :
Stagg, S.M., et al. Cell 134(3):474-484(2008)
Bi, X., et al. Dev. Cell 13(5):635-645(2007)
Tu, L.C., et al. Mol. Cell Proteomics 6(4):575-588(2007)