

CRLF1 Antibody (Center)
Affinity Purified Rabbit Polyclonal Antibody (Pab)
Catalog # AP17059c**Specification**

CRLF1 Antibody (Center) - Product Information

Application	WB,E
Primary Accession	O75462
Other Accession	O9JM58 , NP_004741.1
Reactivity	Human
Predicted	Mouse
Host	Rabbit
Clonality	Polyclonal
Isotype	Rabbit IgG
Calculated MW	46302
Antigen Region	255-283

CRLF1 Antibody (Center) - Additional Information**Gene ID** 9244**Other Names**

Cytokine receptor-like factor 1, Cytokine-like factor 1, CLF-1, ZcytoR5, CRLF1

Target/Specificity

This CRLF1 antibody is generated from rabbits immunized with a KLH conjugated synthetic peptide between 255-283 amino acids from the Central region of human CRLF1.

Dilution

WB~~1:1000

Format

Purified polyclonal antibody supplied in PBS with 0.09% (W/V) sodium azide. This antibody is purified through a protein A column, followed by peptide affinity purification.

Storage

Maintain refrigerated at 2-8°C for up to 2 weeks. For long term storage store at -20°C in small aliquots to prevent freeze-thaw cycles.

Precautions

CRLF1 Antibody (Center) is for research use only and not for use in diagnostic or therapeutic procedures.

CRLF1 Antibody (Center) - Protein Information**Name** CRLF1**Function** In complex with CLCF1, forms a heterodimeric neurotropic cytokine that plays a crucial

role during neuronal development (Probable). May also play a regulatory role in the immune system.

Cellular Location

Secreted.

Tissue Location

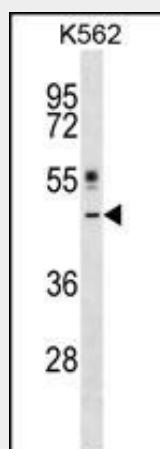
Highest levels of expression observed in spleen, thymus, lymph node, appendix, bone marrow, stomach, placenta, heart, thyroid and ovary. Strongly expressed also in fetal lung

CRLF1 Antibody (Center) - Protocols

Provided below are standard protocols that you may find useful for product applications.

- [Western Blot](#)
- [Blocking Peptides](#)
- [Dot Blot](#)
- [Immunohistochemistry](#)
- [Immunofluorescence](#)
- [Immunoprecipitation](#)
- [Flow Cytometry](#)
- [Cell Culture](#)

CRLF1 Antibody (Center) - Images



CRLF1 Antibody (Center) (Cat. #AP17059c) western blot analysis in K562 cell line lysates (35ug/lane). This demonstrates the CRLF1 antibody detected the CRLF1 protein (arrow).

CRLF1 Antibody (Center) - Background

This gene encodes a member of the cytokine type I receptor family. The protein forms a secreted complex with cardiotrophin-like cytokine factor 1 and acts on cells expressing ciliary neurotrophic factor receptors. The complex can promote survival of neuronal cells. Mutations in this gene result in Crisponi syndrome and cold-induced sweating syndrome. [provided by RefSeq].

CRLF1 Antibody (Center) - References

Tsuritani, K., et al. Calcif. Tissue Int. 86(1):47-57(2010)
Crisponi, L., et al. Am. J. Hum. Genet. 80(5):971-981(2007)
Dagoneau, N., et al. Am. J. Hum. Genet. 80(5):966-970(2007)
Zhang, Z., et al. Protein Sci. 13(10):2819-2824(2004)
Heese, K., et al. J. Cell. Biochem. 91(5):1030-1042(2004)