

**IL28 Antibody (Center)**  
**Purified Rabbit Polyclonal Antibody (Pab)**  
**Catalog # AP1708b****Specification**

---

**IL28 Antibody (Center) - Product Information**

Application	WB,E
Primary Accession	<a href="#">Q8IZJ0</a>
Reactivity	Human, Mouse
Host	Rabbit
Clonality	Polyclonal
Isotype	Rabbit IgG
Antigen Region	61-92

**IL28 Antibody (Center) - Additional Information****Gene ID** 282616**Other Names**

Interferon lambda-2, IFN-lambda-2, Cytokine Zcyto20, Interleukin-28A, IL-28A, IFNL2, IL28A, ZCYTO20

**Target/Specificity**

This IL28 antibody is generated from rabbits immunized with a KLH conjugated synthetic peptide between 61-92 amino acids from the Central region of human IL28.

**Dilution**

WB~~1:1000

**Format**

Purified polyclonal antibody supplied in PBS with 0.09% (W/V) sodium azide. This antibody is prepared by Saturated Ammonium Sulfate (SAS) precipitation followed by dialysis against PBS.

**Storage**

Maintain refrigerated at 2-8°C for up to 2 weeks. For long term storage store at -20°C in small aliquots to prevent freeze-thaw cycles.

**Precautions**

IL28 Antibody (Center) is for research use only and not for use in diagnostic or therapeutic procedures.

**IL28 Antibody (Center) - Protein Information****Name** IFNL2**Synonyms** IL28A, ZCYTO20**Function** Cytokine with antiviral, antitumour and immunomodulatory activities. Plays a critical

role in the antiviral host defense, predominantly in the epithelial tissues. Acts as a ligand for the heterodimeric class II cytokine receptor composed of IL10RB and IFNLR1, and receptor engagement leads to the activation of the JAK/STAT signaling pathway resulting in the expression of IFN-stimulated genes (ISG), which mediate the antiviral state. Has a restricted receptor distribution and therefore restricted targets: is primarily active in epithelial cells and this cell type-selective action is because of the epithelial cell-specific expression of its receptor IFNLR1. Seems not to be essential for early virus-activated host defense in vaginal infection, but plays an important role in Toll-like receptor (TLR)- induced antiviral defense. Plays a significant role in the antiviral immune defense in the intestinal epithelium. Exerts an immunomodulatory effect by up-regulating MHC class I antigen expression.

#### **Cellular Location**

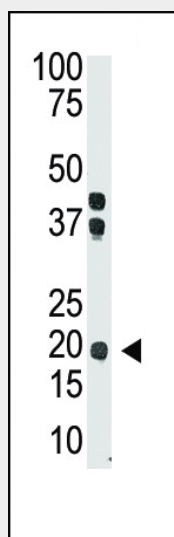
Secreted.

#### **IL28 Antibody (Center) - Protocols**

Provided below are standard protocols that you may find useful for product applications.

- [Western Blot](#)
- [Blocking Peptides](#)
- [Dot Blot](#)
- [Immunohistochemistry](#)
- [Immunofluorescence](#)
- [Immunoprecipitation](#)
- [Flow Cytometry](#)
- [Cell Culture](#)

#### **IL28 Antibody (Center) - Images**



The anti-IL28 Ctr-term Pab (Cat. #AP1708b) is used in Western blot to detect IL28 in mouse brain tissue lysate.

#### **IL28 Antibody (Center) - Background**

IL28 is a cytokine distantly related to type I interferons and the IL-10 family. This gene, interleukin 28B (IL28B), and interleukin 29 (IL29) are three closely related cytokine genes that form a cytokine gene cluster on a chromosomal region mapped to 19q13. Expression of the cytokines encoded by

the three genes can be induced by viral infection. All three cytokines have been shown to interact with a heterodimeric class II cytokine receptor that consists of interleukin 10 receptor, beta (IL10RB) and interleukin 28 receptor, alpha (IL28RA).

#### **IL28 Antibody (Center) - References**

Kotenko, S.V., et al., Nat. Immunol. 4(1):69-77 (2003).  
Sheppard, P., et al., Nat. Immunol. 4(1):63-68 (2003).