

**RPL10A Antibody (N-term)**  
**Affinity Purified Rabbit Polyclonal Antibody (Pab)**  
**Catalog # AP17096a**

**Specification**

---

**RPL10A Antibody (N-term) - Product Information**

Application	WB,E
Primary Accession	<a href="#">P62906</a>
Other Accession	<a href="#">P62907</a> , <a href="#">P53026</a> , <a href="#">Q4R5P3</a> , <a href="#">Q5E9E6</a> , <a href="#">NP_009035.3</a> , <a href="#">G1SKZ8</a>
Reactivity	Human
Predicted	Bovine, Monkey, Mouse, Rabbit, Rat
Host	Rabbit
Clonality	Polyclonal
Isotype	Rabbit IgG
Calculated MW	24831
Antigen Region	3-31

**RPL10A Antibody (N-term) - Additional Information**

**Gene ID** 4736

**Other Names**

60S ribosomal protein L10a, CSA-19, Neural precursor cell expressed developmentally down-regulated protein 6, NEDD-6, RPL10A, NEDD6

**Target/Specificity**

This RPL10A antibody is generated from rabbits immunized with a KLH conjugated synthetic peptide between 3-31 amino acids from the N-terminal region of human RPL10A.

**Dilution**

WB~~1:1000

**Format**

Purified polyclonal antibody supplied in PBS with 0.09% (W/V) sodium azide. This antibody is purified through a protein A column, followed by peptide affinity purification.

**Storage**

Maintain refrigerated at 2-8°C for up to 2 weeks. For long term storage store at -20°C in small aliquots to prevent freeze-thaw cycles.

**Precautions**

RPL10A Antibody (N-term) is for research use only and not for use in diagnostic or therapeutic procedures.

**RPL10A Antibody (N-term) - Protein Information**

**Name** RPL10A

**Synonyms** NEDD6

**Function** Component of the large ribosomal subunit (PubMed:[12962325](#), PubMed:[23636399](#), PubMed:[32669547](#)). The ribosome is a large ribonucleoprotein complex responsible for the synthesis of proteins in the cell (PubMed:[12962325](#), PubMed:[23636399](#), PubMed:[32669547](#)).

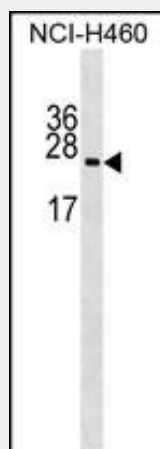
**Cellular Location**

Cytoplasm.

**RPL10A Antibody (N-term) - Protocols**

Provided below are standard protocols that you may find useful for product applications.

- [Western Blot](#)
- [Blocking Peptides](#)
- [Dot Blot](#)
- [Immunohistochemistry](#)
- [Immunofluorescence](#)
- [Immunoprecipitation](#)
- [Flow Cytometry](#)
- [Cell Culture](#)

**RPL10A Antibody (N-term) - Images**

RPL10A Antibody (N-term) (Cat. #AP17096a) western blot analysis in NCI-H460 cell line lysates (35ug/lane). This demonstrates the RPL10A antibody detected the RPL10A protein (arrow).

**RPL10A Antibody (N-term) - Background**

Ribosomes, the organelles that catalyze protein synthesis, consist of a small 40S subunit and a large 60S subunit. Together these subunits are composed of 4 RNA species and approximately 80 structurally distinct proteins. This gene encodes a ribosomal protein that is a component of the 60S subunit. The protein belongs to the L1P family of ribosomal proteins. It is located in the cytoplasm. The expression of this gene is downregulated in the thymus by cyclosporin-A (CsA), an immunosuppressive drug. Studies in mice have shown that the expression of the ribosomal protein L10a gene is downregulated in neural precursor cells during development. This gene previously was referred to as NEDD6 (neural

precursor cell expressed, developmentally downregulated 6), but it has been renamed RPL10A (ribosomal protein 10a). As is typical for genes encoding ribosomal proteins, there are multiple processed pseudogenes of this gene dispersed through the genome. [provided by RefSeq].

#### **RPL10A Antibody (N-term) - References**

Andersen, J.S., et al. Nature 433(7021):77-83(2005)  
Kapp, L.D., et al. Annu. Rev. Biochem. 73, 657-704 (2004) :  
Mungall, A.J., et al. Nature 425(6960):805-811(2003)  
Mazumder, B., et al. Cell 115(2):187-198(2003)  
Odintsova, T.I., et al. J. Protein Chem. 22(3):249-258(2003)