

**GABRE Antibody (N-term)**  
**Affinity Purified Rabbit Polyclonal Antibody (Pab)**  
**Catalog # AP17100a**

**Specification**

---

**GABRE Antibody (N-term) - Product Information**

Application	WB,E
Primary Accession	<a href="#">P78334</a>
Other Accession	<a href="#">NP_004952.2</a>
Reactivity	Human
Host	Rabbit
Clonality	Polyclonal
Isotype	Rabbit IgG
Calculated MW	57972
Antigen Region	66-94

**GABRE Antibody (N-term) - Additional Information**

**Gene ID** 2564

**Other Names**

Gamma-aminobutyric acid receptor subunit epsilon, GABA(A) receptor subunit epsilon, GABRE

**Target/Specificity**

This GABRE antibody is generated from rabbits immunized with a KLH conjugated synthetic peptide between 66-94 amino acids from the N-terminal region of human GABRE.

**Dilution**

WB~~1:1000

**Format**

Purified polyclonal antibody supplied in PBS with 0.09% (W/V) sodium azide. This antibody is purified through a protein A column, followed by peptide affinity purification.

**Storage**

Maintain refrigerated at 2-8°C for up to 2 weeks. For long term storage store at -20°C in small aliquots to prevent freeze-thaw cycles.

**Precautions**

GABRE Antibody (N-term) is for research use only and not for use in diagnostic or therapeutic procedures.

**GABRE Antibody (N-term) - Protein Information**

**Name** GABRE

**Function** GABA, the major inhibitory neurotransmitter in the vertebrate brain, mediates neuronal inhibition by binding to the GABA/benzodiazepine receptor and opening an integral chloride

channel.

#### **Cellular Location**

Postsynaptic cell membrane; Multi-pass membrane protein. Cell membrane; Multi-pass membrane protein

#### **Tissue Location**

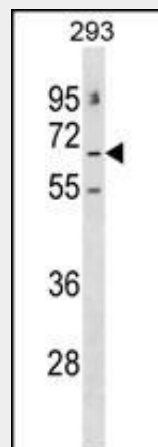
Expressed in many tissues. Highest levels of expression in adult heart and placenta

### **GABRE Antibody (N-term) - Protocols**

Provided below are standard protocols that you may find useful for product applications.

- [Western Blot](#)
- [Blocking Peptides](#)
- [Dot Blot](#)
- [Immunohistochemistry](#)
- [Immunofluorescence](#)
- [Immunoprecipitation](#)
- [Flow Cytometry](#)
- [Cell Culture](#)

### **GABRE Antibody (N-term) - Images**



GABRE Antibody (N-term) (Cat. #AP17100a) western blot analysis in 293 cell line lysates (35ug/lane). This demonstrates the GABRE antibody detected the GABRE protein (arrow).

### **GABRE Antibody (N-term) - Background**

The product of this gene belongs to the ligand-gated ionic channel (TC 1.A.9) family. It encodes the gamma-aminobutyric acid (GABA) A receptor which is a multisubunit chloride channel that mediates the fastest inhibitory synaptic transmission in the central nervous system. This gene encodes an epsilon subunit. It is mapped to chromosome Xq28 in a cluster comprised of genes encoding alpha 3, beta 4 and theta subunits of the same receptor. Alternatively spliced transcript variants have been identified, but only one is thought to encode a protein.

### **GABRE Antibody (N-term) - References**

Pinheiro, A.P., et al. Am. J. Med. Genet. B Neuropsychiatr. Genet. 153B (5), 1070-1080 (2010) :  
Craddock, N., et al. Mol. Psychiatry 15(2):146-153(2010)  
Gratacos, M., et al. Am. J. Med. Genet. B Neuropsychiatr. Genet. 150B (6), 808-816 (2009) :  
Tabakoff, B., et al. BMC Biol. 7, 70 (2009) :  
Fernandez, F., et al. BMC Med. Genet. 9, 109 (2008) :