

**CHRNA Antibody (N-term)**  
**Affinity Purified Rabbit Polyclonal Antibody (Pab)**  
**Catalog # AP17105a****Specification**

---

**CHRNA Antibody (N-term) - Product Information**

Application	WB,E
Primary Accession	<a href="#">P07510</a>
Other Accession	<a href="#">NP_005190.4</a>
Reactivity	Human
Host	Rabbit
Clonality	Polyclonal
Isotype	Rabbit IgG
Calculated MW	57883
Antigen Region	22-50

**CHRNA Antibody (N-term) - Additional Information****Gene ID** 1146**Other Names**

Acetylcholine receptor subunit gamma, CHRNA, ACHRG

**Target/Specificity**

This CHRNA antibody is generated from rabbits immunized with a KLH conjugated synthetic peptide between 22-50 amino acids from the N-terminal region of human CHRNA.

**Dilution**

WB~~1:1000

**Format**

Purified polyclonal antibody supplied in PBS with 0.09% (W/V) sodium azide. This antibody is purified through a protein A column, followed by peptide affinity purification.

**Storage**

Maintain refrigerated at 2-8°C for up to 2 weeks. For long term storage store at -20°C in small aliquots to prevent freeze-thaw cycles.

**Precautions**

CHRNA Antibody (N-term) is for research use only and not for use in diagnostic or therapeutic procedures.

**CHRNA Antibody (N-term) - Protein Information****Name** CHRNA ([HGNC:1967](#))**Synonyms** ACHRG

**Function** After binding acetylcholine, the AChR responds by an extensive change in conformation that affects all subunits and leads to opening of an ion-conducting channel across the plasma membrane.

#### **Cellular Location**

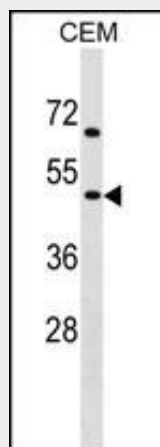
Postsynaptic cell membrane; Multi-pass membrane protein. Cell membrane; Multi-pass membrane protein

#### **CHRNG Antibody (N-term) - Protocols**

Provided below are standard protocols that you may find useful for product applications.

- [Western Blot](#)
- [Blocking Peptides](#)
- [Dot Blot](#)
- [Immunohistochemistry](#)
- [Immunofluorescence](#)
- [Immunoprecipitation](#)
- [Flow Cytometry](#)
- [Cell Culture](#)

#### **CHRNG Antibody (N-term) - Images**



CHRNG Antibody (N-term) (Cat. #AP17105a) western blot analysis in CEM cell line lysates (35ug/lane). This demonstrates the CHRNG antibody detected the CHRNG protein (arrow).

#### **CHRNG Antibody (N-term) - Background**

The mammalian muscle-type acetylcholine receptor is a transmembrane pentameric glycoprotein with two alpha subunits, one beta, one delta, and one epsilon (in adult skeletal muscle) or gamma (in fetal and denervated muscle) subunit. This gene, which encodes the gamma subunit, is expressed prior to the thirty-third week of gestation in humans. The gamma subunit of the acetylcholine receptor plays a role in neuromuscular organogenesis and ligand binding and disruption of gamma subunit expression prevents the correct localization of the receptor in cell membranes. Mutations in this gene cause Escobar syndrome and a lethal form of multiple pterygium syndrome. Muscle-type acetylcholine receptor is the major antigen in the autoimmune disease myasthenia gravis.

**CHRNA Antibody (N-term) - References**

Saccone, N.L., et al. Genes Brain Behav. (2010) In press :  
Gratacos, M., et al. Am. J. Med. Genet. B Neuropsychiatr. Genet. 150B (6), 808-816 (2009) :  
Saccone, N.L., et al. Am. J. Med. Genet. B Neuropsychiatr. Genet. 150B (4), 453-466 (2009) :  
Zouridakis, M., et al. Biochim. Biophys. Acta 1794(2):355-366(2009)  
Chang, B., et al. Int. J. Surg. Pathol. 17(1):6-15(2009)