

RIC8A Antibody (Center)
Affinity Purified Rabbit Polyclonal Antibody (Pab)
Catalog # AP17108c**Specification**

RIC8A Antibody (Center) - Product Information

Application	WB,E
Primary Accession	O9NPQ8
Other Accession	O4R720 , NP_068751.4
Reactivity	Human
Predicted	Monkey
Host	Rabbit
Clonality	Polyclonal
Isotype	Rabbit IgG
Calculated MW	59710
Antigen Region	244-272

RIC8A Antibody (Center) - Additional Information**Gene ID** 60626**Other Names**

Synembryn-A, Protein Ric-8A, RIC8A

Target/Specificity

This RIC8A antibody is generated from rabbits immunized with a KLH conjugated synthetic peptide between 244-272 amino acids from the Central region of human RIC8A.

Dilution

WB~~1:1000

Format

Purified polyclonal antibody supplied in PBS with 0.09% (W/V) sodium azide. This antibody is purified through a protein A column, followed by peptide affinity purification.

Storage

Maintain refrigerated at 2-8°C for up to 2 weeks. For long term storage store at -20°C in small aliquots to prevent freeze-thaw cycles.

Precautions

RIC8A Antibody (Center) is for research use only and not for use in diagnostic or therapeutic procedures.

RIC8A Antibody (Center) - Protein Information**Name** RIC8A**Function** Guanine nucleotide exchange factor (GEF), which can activate some, but not all, G-alpha

proteins. Able to activate GNAI1, GNAO1 and GNAQ, but not GNAS by exchanging bound GDP for free GTP. Involved in regulation of microtubule pulling forces during mitotic movement of chromosomes by stimulating G(i)-alpha protein, possibly leading to release G(i)-alpha-GTP and NuMA proteins from the NuMA-GPSM2-G(i)-alpha-GDP complex (By similarity). Also acts as an activator for G(q)-alpha (GNAQ) protein by enhancing the G(q)-coupled receptor-mediated ERK activation.

Cellular Location

Cytoplasm {ECO:0000250|UniProtKB:Q80ZG1}. Cell membrane

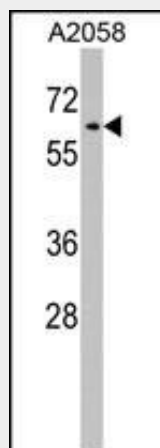
{ECO:0000250|UniProtKB:Q80ZG1}. Note=Colocalizes with RGS14 in CA2 hippocampal neurons. Colocalizes with GNAI1 and RGS14 at the plasma membrane (By similarity).

RIC8A Antibody (Center) - Protocols

Provided below are standard protocols that you may find useful for product applications.

- [Western Blot](#)
- [Blocking Peptides](#)
- [Dot Blot](#)
- [Immunohistochemistry](#)
- [Immunofluorescence](#)
- [Immunoprecipitation](#)
- [Flow Cytometry](#)
- [Cell Culture](#)

RIC8A Antibody (Center) - Images



RIC8A Antibody (Center) (Cat. #AP17108c) western blot analysis in A2058 cell line lysates (35ug/lane). This demonstrates the RIC8A antibody detected the RIC8A protein (arrow).

RIC8A Antibody (Center) - Background

Guanine nucleotide exchange factor (GEF), which can activate some, but not all, G-alpha proteins. Able to activate GNAI1, GNAO1 and GNAQ, but not GNAS by exchanging bound GDP for free GTP. Involved in regulation of microtubule pulling forces during mitotic movement of chromosomes by stimulating G(i)-alpha protein, possibly leading to release G(i)-alpha-GTP and NuMA proteins from the NuMA-GPSM2-G(i)-alpha-GDP complex (By similarity). Also acts as an activator for G(q)-alpha (GNAQ) protein by enhancing the G(q)-coupled receptor-mediated ERK activation.

RIC8A Antibody (Center) - References

Woodard, G.E., et al. Mol. Cell. Biol. 30(14):3519-3530(2010)
Matsuoka, S., et al. Science 316(5828):1160-1166(2007)
Lim, J., et al. Cell 125(4):801-814(2006)
Nishimura, A., et al. Genes Cells 11(5):487-498(2006)
Tall, G.G., et al. J. Biol. Chem. 278(10):8356-8362(2003)