

SOCS7 Antibody (C-term)
Affinity Purified Rabbit Polyclonal Antibody (Pab)
Catalog # AP17111b**Specification**

SOCS7 Antibody (C-term) - Product Information

Application	WB,E
Primary Accession	O14512
Other Accession	Q8VHQ2 , NP_055413.1
Reactivity	Human
Predicted	Mouse
Host	Rabbit
Clonality	Polyclonal
Isotype	Rabbit IgG
Calculated MW	62969
Antigen Region	458-486

SOCS7 Antibody (C-term) - Additional Information**Gene ID** 30837**Other Names**

Suppressor of cytokine signaling 7, SOCS-7, Nck, Ash and phospholipase C gamma-binding protein, Nck-associated protein 4, NAP-4, SOCS7, NAP4, SOCS6

Target/Specificity

This SOCS7 antibody is generated from rabbits immunized with a KLH conjugated synthetic peptide between 458-486 amino acids from the C-terminal region of human SOCS7.

Dilution

WB~~1:1000

Format

Purified polyclonal antibody supplied in PBS with 0.09% (W/V) sodium azide. This antibody is purified through a protein A column, followed by peptide affinity purification.

Storage

Maintain refrigerated at 2-8°C for up to 2 weeks. For long term storage store at -20°C in small aliquots to prevent freeze-thaw cycles.

Precautions

SOCS7 Antibody (C-term) is for research use only and not for use in diagnostic or therapeutic procedures.

SOCS7 Antibody (C-term) - Protein Information**Name** SOCS7

Synonyms NAP4, SOCS6

Function Regulates signaling cascades probably through protein ubiquitination and/or sequestration. Functions in insulin signaling and glucose homeostasis through IRS1 ubiquitination and subsequent proteasomal degradation. Inhibits also prolactin, growth hormone and leptin signaling by preventing STAT3 and STAT5 activation, sequestering them in the cytoplasm and reducing their binding to DNA. May be a substrate recognition component of a SCF-like E3 ubiquitin-protein ligase complex which mediates the ubiquitination and subsequent proteasomal degradation of target proteins (By similarity).

Cellular Location

Cytoplasm. Cell membrane; Peripheral membrane protein; Cytoplasmic side. Nucleus. Note=Mostly cytoplasmic, but shuttles between the cytoplasm and the nucleus. Rapidly relocalizes to the nucleus after UV irradiation. Cytoplasmic location depends upon SEPT7 presence

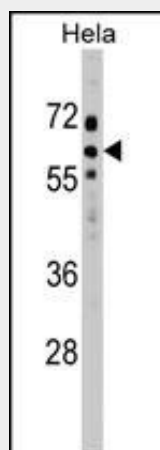
Tissue Location

Expressed in brain and leukocytes. Also in fetal lung fibroblasts and fetal brain.

SOCS7 Antibody (C-term) - Protocols

Provided below are standard protocols that you may find useful for product applications.

- [Western Blot](#)
- [Blocking Peptides](#)
- [Dot Blot](#)
- [Immunohistochemistry](#)
- [Immunofluorescence](#)
- [Immunoprecipitation](#)
- [Flow Cytometry](#)
- [Cell Culture](#)

SOCS7 Antibody (C-term) - Images

SOCS7 Antibody (C-term) (Cat. #AP17111b) western blot analysis in HeLa cell line lysates (35ug/lane). This demonstrates the SOCS7 antibody detected the SOCS7 protein (arrow).

SOCS7 Antibody (C-term) - Background

Regulates signaling cascades probably through protein ubiquitination and/or sequestration. Functions in insulin signaling and glucose homeostasis through IRS1 ubiquitination and subsequent

proteasomal degradation. Inhibits also prolactin, growth hormone and leptin signaling by preventing STAT3 and STAT5 activation, sequestering them in the cytoplasm and reducing their binding to DNA. May be a substrate recognition component of a SCF-like E3 ubiquitin-protein ligase complex which mediates the ubiquitination and subsequent proteasomal degradation of target proteins (By similarity).

SOCS7 Antibody (C-term) - References

Pazienza, V., et al. J. Gen. Virol. 91 (PT 7), 1678-1686 (2010) :
Sasi, W., et al. BMC Cancer 10, 178 (2010) :
Kremer, B.E., et al. Cell 130(5):837-850(2007)
Zody, M.C., et al. Nature 440(7087):1045-1049(2006)
Banks, A.S., et al. J. Clin. Invest. 115(9):2462-2471(2005)