

P2RX6 Antibody (Center)
Affinity Purified Rabbit Polyclonal Antibody (Pab)
Catalog # AP17114c

Specification

P2RX6 Antibody (Center) - Product Information

Application	WB,E
Primary Accession	O15547
Other Accession	NP_001153026.1 , NP_005437.2
Reactivity	Human
Host	Rabbit
Clonality	Polyclonal
Isotype	Rabbit IgG
Calculated MW	48829
Antigen Region	198-226

P2RX6 Antibody (Center) - Additional Information

Gene ID 9127

Other Names

P2X purinoceptor 6, P2X6, ATP receptor, P2XM, Purinergic receptor, Purinergic receptor P2X-like 1, P2RX6, P2RXL1, P2X6

Target/Specificity

This P2RX6 antibody is generated from rabbits immunized with a KLH conjugated synthetic peptide between 198-226 amino acids from the Central region of human P2RX6.

Dilution

WB~~1:1000

Format

Purified polyclonal antibody supplied in PBS with 0.09% (W/V) sodium azide. This antibody is purified through a protein A column, followed by peptide affinity purification.

Storage

Maintain refrigerated at 2-8°C for up to 2 weeks. For long term storage store at -20°C in small aliquots to prevent freeze-thaw cycles.

Precautions

P2RX6 Antibody (Center) is for research use only and not for use in diagnostic or therapeutic procedures.

P2RX6 Antibody (Center) - Protein Information

Name P2RX6

Synonyms P2RXL1, P2X6

Function Receptor for ATP that acts as a ligand-gated ion channel.

Cellular Location

Membrane; Multi-pass membrane protein.

Tissue Location

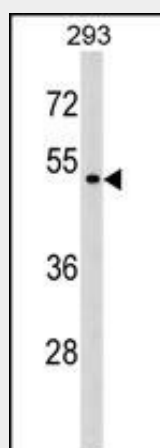
Expressed predominantly in skeletal muscle.

P2RX6 Antibody (Center) - Protocols

Provided below are standard protocols that you may find useful for product applications.

- [Western Blot](#)
- [Blocking Peptides](#)
- [Dot Blot](#)
- [Immunohistochemistry](#)
- [Immunofluorescence](#)
- [Immunoprecipitation](#)
- [Flow Cytometry](#)
- [Cell Culture](#)

P2RX6 Antibody (Center) - Images



P2RX6 Antibody (Center) (Cat. #AP17114c) western blot analysis in 293 cell line lysates (35ug/lane). This demonstrates the P2RX6 antibody detected the P2RX6 protein (arrow).

P2RX6 Antibody (Center) - Background

The protein encoded by this gene belongs to the family of P2X receptors, which are ATP-gated ion channels and mediate rapid and selective permeability to cations. This gene is predominantly expressed in skeletal muscle, and regulated by p53. The encoded protein is associated with VE-cadherin at the adherens junctions of human umbilical vein endothelial cells. Alternative splicing results in multiple transcript variants. A related pseudogene, which is also located on chromosome 22, has been identified.

P2RX6 Antibody (Center) - References

Trynka, G., et al. Gut 58(8):1078-1083(2009)

Luke, M.M., et al. Stroke 40(2):363-368(2009)
Palomino-Doza, J., et al. Hypertension 52(5):980-985(2008)
Shiffman, D., et al. Arterioscler. Thromb. Vasc. Biol. 28(1):173-179(2008)
Dubyak, G.R. Mol. Pharmacol. 72(6):1402-1405(2007)