

TPBG Antibody (Center)
Affinity Purified Rabbit Polyclonal Antibody (Pab)
Catalog # AP17116c**Specification**

TPBG Antibody (Center) - Product Information

| | |
|-------------------|--|
| Application | WB,E |
| Primary Accession | Q13641 |
| Other Accession | NP_001159864.1 , NP_006661.1 |
| Reactivity | Human |
| Host | Rabbit |
| Clonality | Polyclonal |
| Isotype | Rabbit IgG |
| Calculated MW | 46032 |
| Antigen Region | 169-197 |

TPBG Antibody (Center) - Additional Information**Gene ID** 7162**Other Names**

Trophoblast glycoprotein, 5T4 oncofetal antigen, 5T4 oncofetal trophoblast glycoprotein, 5T4 oncotrophoblast glycoprotein, M6P1, Wnt-activated inhibitory factor 1, WAIF1, TPBG, 5T4

Target/Specificity

This TPBG antibody is generated from rabbits immunized with a KLH conjugated synthetic peptide between 169-197 amino acids from the Central region of human TPBG.

Dilution

WB~~1:1000

Format

Purified polyclonal antibody supplied in PBS with 0.09% (W/V) sodium azide. This antibody is purified through a protein A column, followed by peptide affinity purification.

Storage

Maintain refrigerated at 2-8°C for up to 2 weeks. For long term storage store at -20°C in small aliquots to prevent freeze-thaw cycles.

Precautions

TPBG Antibody (Center) is for research use only and not for use in diagnostic or therapeutic procedures.

TPBG Antibody (Center) - Protein Information**Name** TPBG**Synonyms** 5T4

Function May function as an inhibitor of Wnt/beta-catenin signaling by indirectly interacting with LRP6 and blocking Wnt3a-dependent LRP6 internalization.

Cellular Location

Cell membrane; Single-pass type I membrane protein

Tissue Location

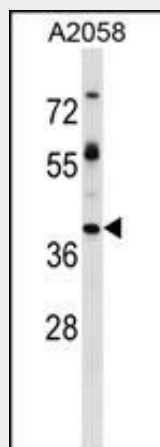
Expressed by all types of trophoblasts as early as 9 weeks of development. Specific for trophoblastic cells except for amniotic epithelium. In adult tissues, the expression is limited to a few epithelial cell types but is found on a variety of carcinoma

TPBG Antibody (Center) - Protocols

Provided below are standard protocols that you may find useful for product applications.

- [Western Blot](#)
- [Blocking Peptides](#)
- [Dot Blot](#)
- [Immunohistochemistry](#)
- [Immunofluorescence](#)
- [Immunoprecipitation](#)
- [Flow Cytometry](#)
- [Cell Culture](#)

TPBG Antibody (Center) - Images



TPBG Antibody (Center) (Cat. #AP17116c) western blot analysis in A2058 cell line lysates (35ug/lane). This demonstrates the TPBG antibody detected the TPBG protein (arrow).

TPBG Antibody (Center) - Background

This gene encodes a leucine-rich transmembrane glycoprotein that may be involved in cell adhesion. The encoded protein is an oncofetal antigen that is specific to trophoblast cells. In adults this protein is highly expressed in many tumor cells and is associated with poor clinical outcome in numerous cancers. Alternate splicing in the 5' UTR results in multiple transcript variants that encode the same protein. [provided by RefSeq].

TPBG Antibody (Center) - References

Elkord, E., et al. J. Immunother. 31(9):820-829(2008)
Shingler, W.H., et al. Int. Immunol. 20(8):1057-1066(2008)
Okazaki, S., et al. Obstet Gynecol 110(5):1130-1136(2007)
Ward, C.M., et al. Exp. Cell Res. 312(10):1713-1726(2006)
Mulryan, K., et al. Mol. Cancer Ther. 1(12):1129-1137(2002)