

**ZNF16 Antibody (N-term)**  
**Affinity Purified Rabbit Polyclonal Antibody (Pab)**  
**Catalog # AP17131a****Specification**

---

**ZNF16 Antibody (N-term) - Product Information**

|                   |  |
|-------------------|--|
| Application       | WB,E   |
| Primary Accession | <a href="#">P17020</a>                                       |
| Other Accession   | <a href="#">NP_001025147.2</a> , <a href="#">NP_008889.2</a> |
| Reactivity        | Human  |
| Host              | Rabbit   |
| Clonality         | Polyclonal   |
| Isotype           | Rabbit IgG   |
| Calculated MW     | 76472  |
| Antigen Region    | 53-81  |

**ZNF16 Antibody (N-term) - Additional Information****Gene ID** 7564**Other Names**

Zinc finger protein 16, Zinc finger protein KOX9, ZNF16, HZF1, KOX9

**Target/Specificity**

This ZNF16 antibody is generated from rabbits immunized with a KLH conjugated synthetic peptide between 53-81 amino acids from the N-terminal region of human ZNF16.

**Dilution**

WB~~1:1000

**Format**

Purified polyclonal antibody supplied in PBS with 0.09% (W/V) sodium azide. This antibody is purified through a protein A column, followed by peptide affinity purification.

**Storage**

Maintain refrigerated at 2-8°C for up to 2 weeks. For long term storage store at -20°C in small aliquots to prevent freeze-thaw cycles.

**Precautions**

ZNF16 Antibody (N-term) is for research use only and not for use in diagnostic or therapeutic procedures.

**ZNF16 Antibody (N-term) - Protein Information****Name** ZNF16**Synonyms** HZF1, KOX9

**Function** Acts as a transcriptional activator. Promotes cell proliferation by facilitating the cell cycle phase transition from the S to G2/M phase. Involved in both the hemin- and phorbol myristate acetate (PMA)-induced erythroid and megakaryocytic differentiation, respectively. Also plays a role as an inhibitor of cell apoptosis.

**Cellular Location**

Nucleus.

**Tissue Location**

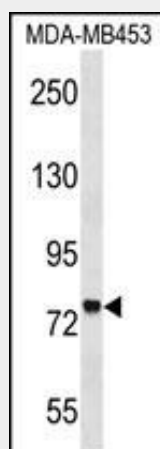
Ubiquitous..

**ZNF16 Antibody (N-term) - Protocols**

Provided below are standard protocols that you may find useful for product applications.

- [Western Blot](#)
- [Blocking Peptides](#)
- [Dot Blot](#)
- [Immunohistochemistry](#)
- [Immunofluorescence](#)
- [Immunoprecipitation](#)
- [Flow Cytometry](#)
- [Cell Culture](#)

**ZNF16 Antibody (N-term) - Images**



ZNF16 Antibody (N-term) (Cat. #AP17131a) western blot analysis in MDA-MB453 cell line lysates (35ug/lane). This demonstrates the ZNF16 antibody detected the ZNF16 protein (arrow).

**ZNF16 Antibody (N-term) - Background**

The protein encoded by this gene contains a C2H2 type of zinc finger, and thus may function as a transcription factor. This gene is located in a region close to ZNF7/KOX4, a gene also encoding a zinc finger protein, on chromosome 8. Two alternatively spliced variants, encoding the same protein, have been identified.

**ZNF16 Antibody (N-term) - References**

Dreier, B., et al. J. Mol. Biol. 303(4):489-502(2000)

Rousseau-Merck, M.F., et al. Ann. Genet. 38(2):81-84(1995)  
Thiesen, H.J. New Biol. 2(4):363-374(1990)